

CHROMATOGRAPH FITTINGS

Rotarex chromatograph fittings are designed to cover a wide range of analytical applications.

Rotarex technology allows to maintain a laminar flow for liquid chromatography, where turbulences are not permitted. Also, to avoid impacting the resolution of the chromatograph, the design is minimizing internal cavities.

Rotarex chromatograph column end and union embodies the proven Rotarex high quality standards for production and quality control.

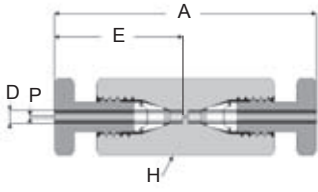
CHROMATOGRAPH STRAIGHT UNION - Low dead volume | USFVM

TUBE SIZE - FRACTIONAL (inch)

D	Reference	A	E	H (mm)	P
1/16"	USFVM I 1/16	1.25	0.61	8	0.013

SS 316L version only

Hex flats (H) are metric. Fractional upon request
*Specify material when ordering. See page 8 for materials and codes.



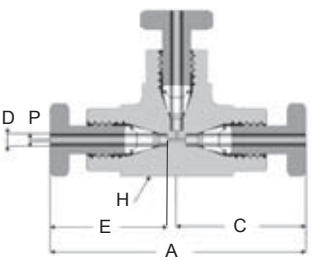
CHROMATOGRAPH UNION TEE - Low dead volume | TSFVM

TUBE SIZE - FRACTIONAL (inch)

D	Reference	A	E	H (mm)	P
1/16"	TSFVM I 1/16	1,30	0.61	12	0.013

SS 316L version only

Hex flats (H) are metric. Fractional upon request
*Specify material when ordering. See page 8 for materials and codes.



CHROMATOGRAPH MALE CONNECTOR - Low dead volume | UMSFVM

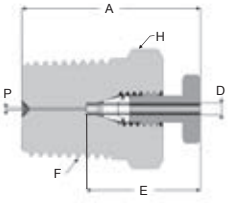
NPT (N)

TUBE SIZE - FRACTIONAL (inch)

D	F	Reference	A	E	H (mm)	P
1/16"	1/8"	UMSFVM 1/16 1/8 N	0.75	0.61	12	0.013
1/16"	1/4"	UMSFVM 1/16 1/4 N	1.35	0.61	14	0.013
1/16"	3/8"	UMSFVM 1/16 3/8 N	1.44	0.61	17	0.013

SS 316L version only

Hex flats (H) are metric. Fractional upon request
*Specify material when ordering. See page 8 for materials and codes.



COLUMN END REDUCING UNION - Low dead volume | URSFVM

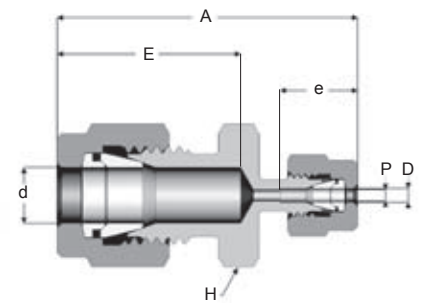
TUBE SIZE - FRACTIONAL (inch)

d	D	Reference	A	E	e	H (mm)	P
1/8"	1/16" (1.58)	URSFVM I 1/8 1/16	1.22	0.73	/	12	0.013
1/4"	1/16" (1.58)	URSFVM I 1/4 1/16	1.35	0.82	0.33	14	0.013
1/4"	1/16" (1.58)	URSFVM I 1/4 1/16	1.35	0.82	/	14	0.013
3/8"	1/16" (1.58)	URSFVM I 3/8 1/16	1.44	0.92	/	19	0.013

SS 316L version only

Hex flats (H) are metric. Fractional upon request

*Specify material when ordering. See page 8 for materials and codes.



COLUMN END REDUCING UNION - Zero dead volume | URSZVM

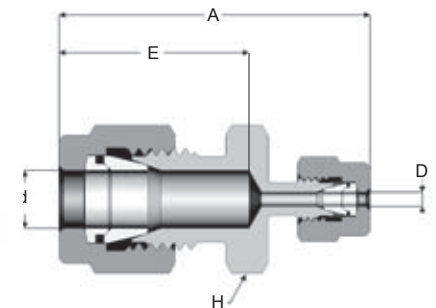
TUBE SIZE - FRACTIONAL (inch)

d	D	Reference	A	E	H (mm)
1/8"	1/16" (1.58)	URSZVM I 1/8 1/16	1.22	0.73	12
1/4"	1/16" (1.58)	URSZVM I 1/4 1/16	1.35	0.82	14
1/4"	1/16" (1.58)	URSZVM I 1/4 1/16	1.35	0.82	14
3/8"	1/16" (1.58)	URSZVM I 3/8 1/16	1.44	0.92	19

SS 316L version only

Hex flats (H) are metric. Fractional upon request

*Specify material when ordering. See page 8 for materials and codes.



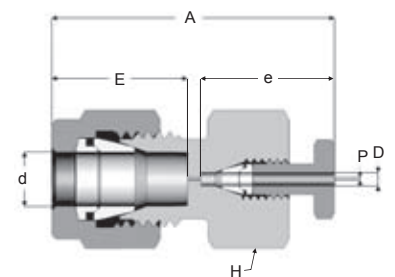
COLUMN END FEMALE CONNECTOR - Low dead volume | UFSFVM

TUBE SIZE - FRACTIONAL (inch)

d (mm)	D (mm)	Reference	A	E	e	H (mm)	P
1/16"	1/8"	UFSFVM I 1/8 1/16	1.17	0.51	0.61	12	0.013
1/16"	1/4"	UFSFVM I 1/4 1/16	1.25	0.60	0.61	14	0.013
1/16"	3/8"	UFSFVM I 3/8 1/16	1.35	0.68	0.61	19	0.013

SS 316L version only

*Specify material when ordering. See page 8 for materials and codes.



MALE NUT | EDS

TUBE SIZE - FRACTIONAL (inch)

D	Reference	A	H (mm)
1/16"	EDS 1/16	0.38	8
1/8"	EDS 1/8	0.53	12
1/4"	EDS 1/4	0.63	14

SS 316L version only

*Specify material when ordering. See page 8 for materials and codes.

