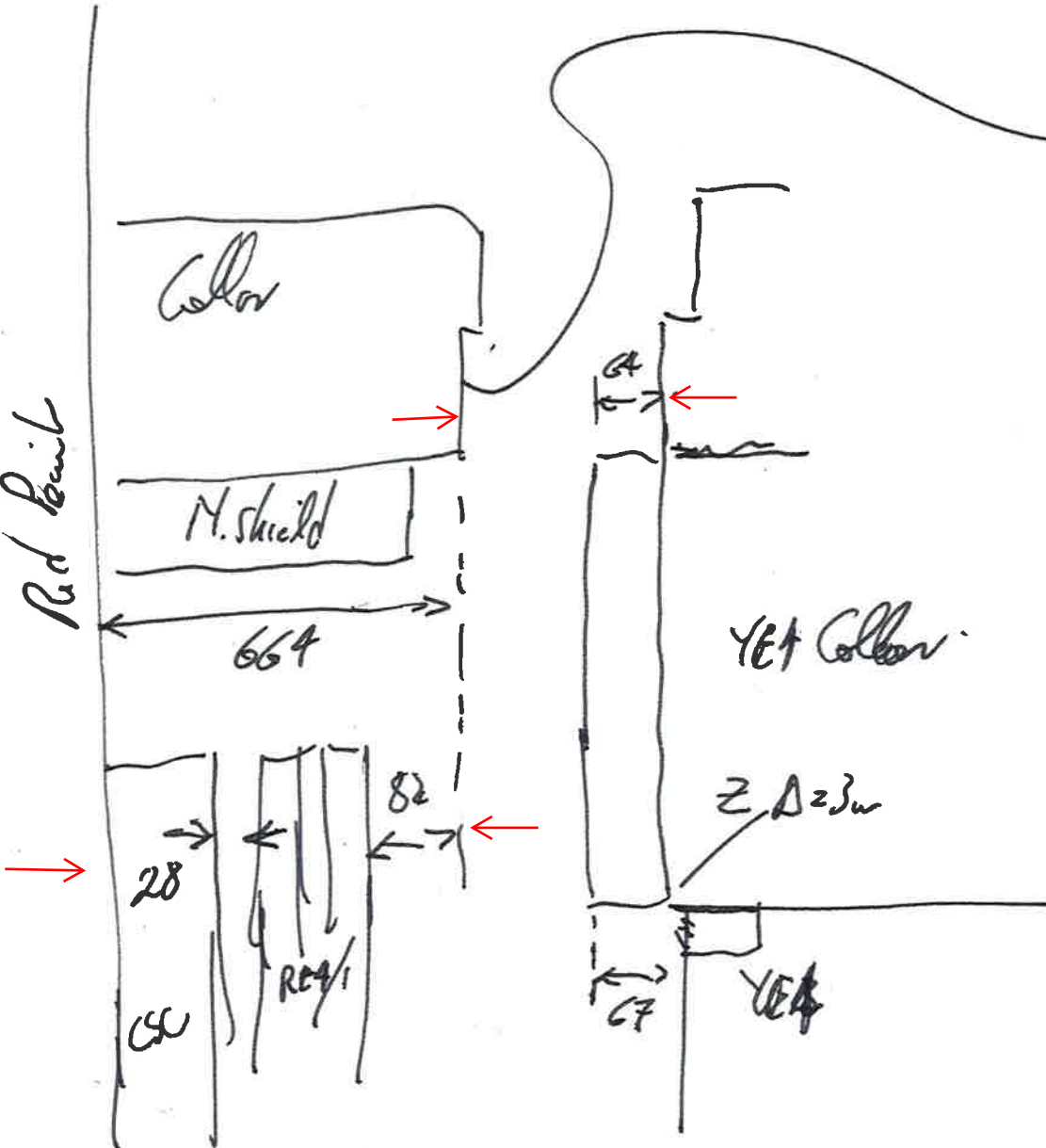


BP

$$82 - 64 - 4 = 14$$

Y83

Rad Point

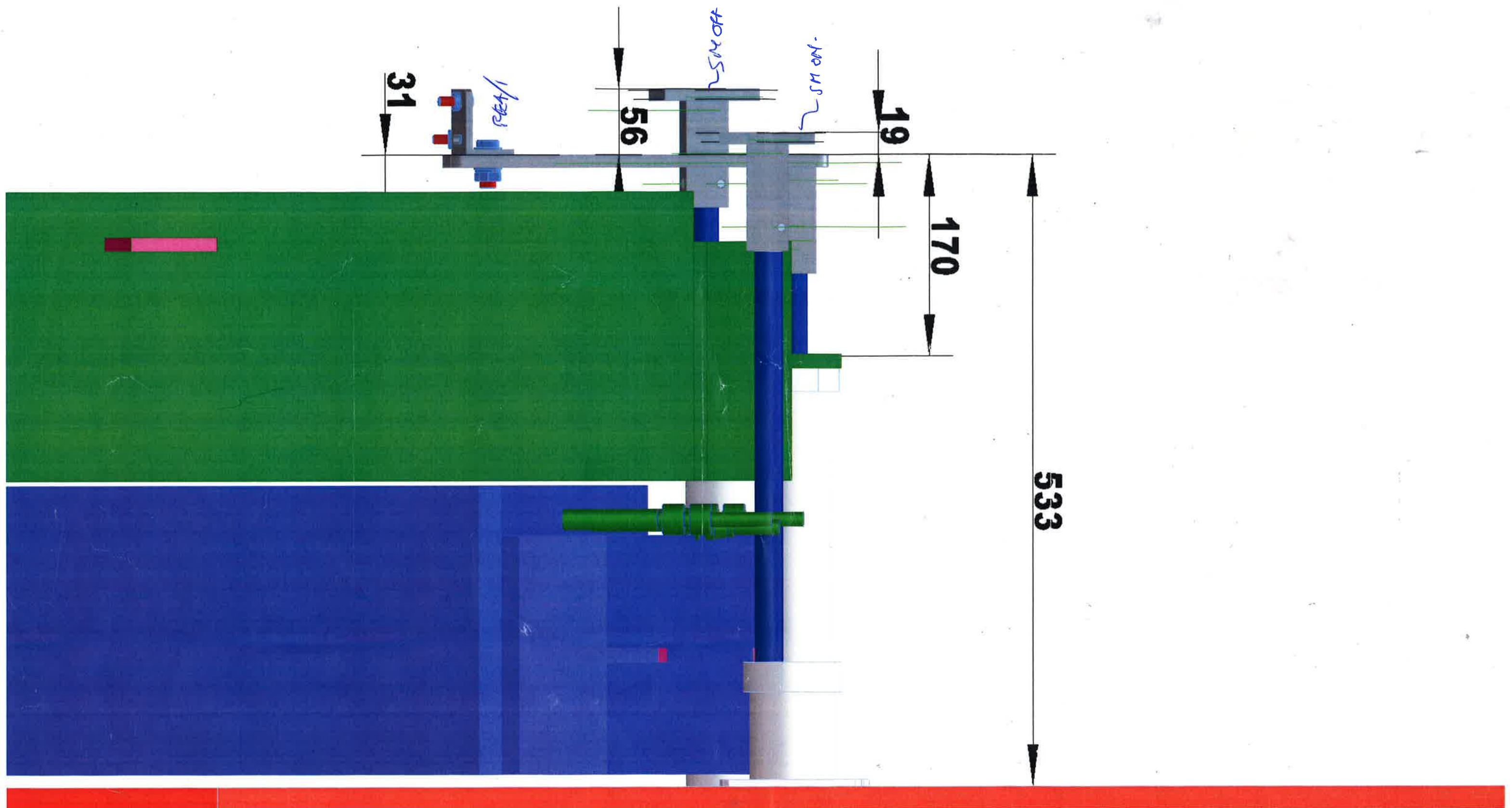


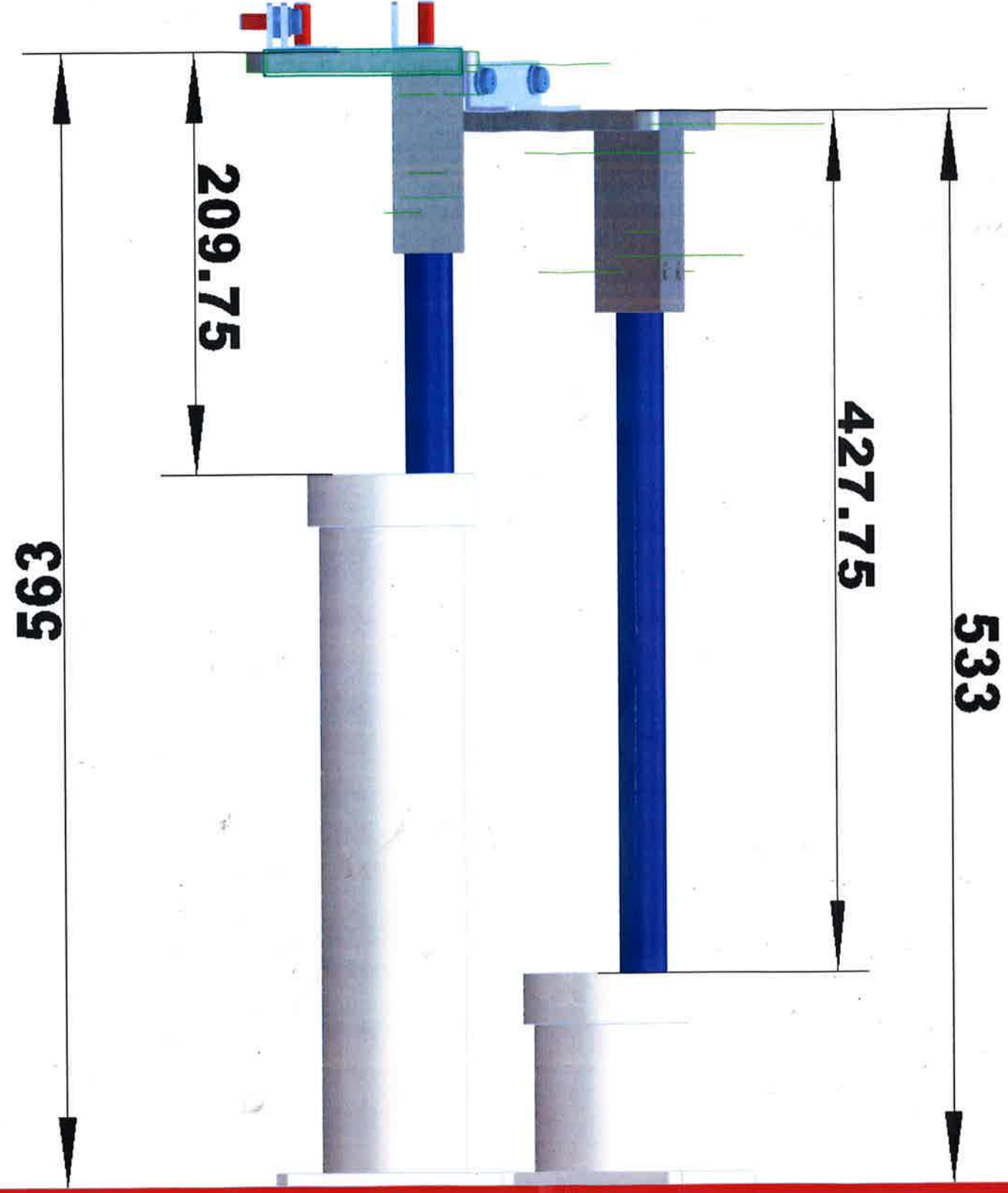
Then focus took.

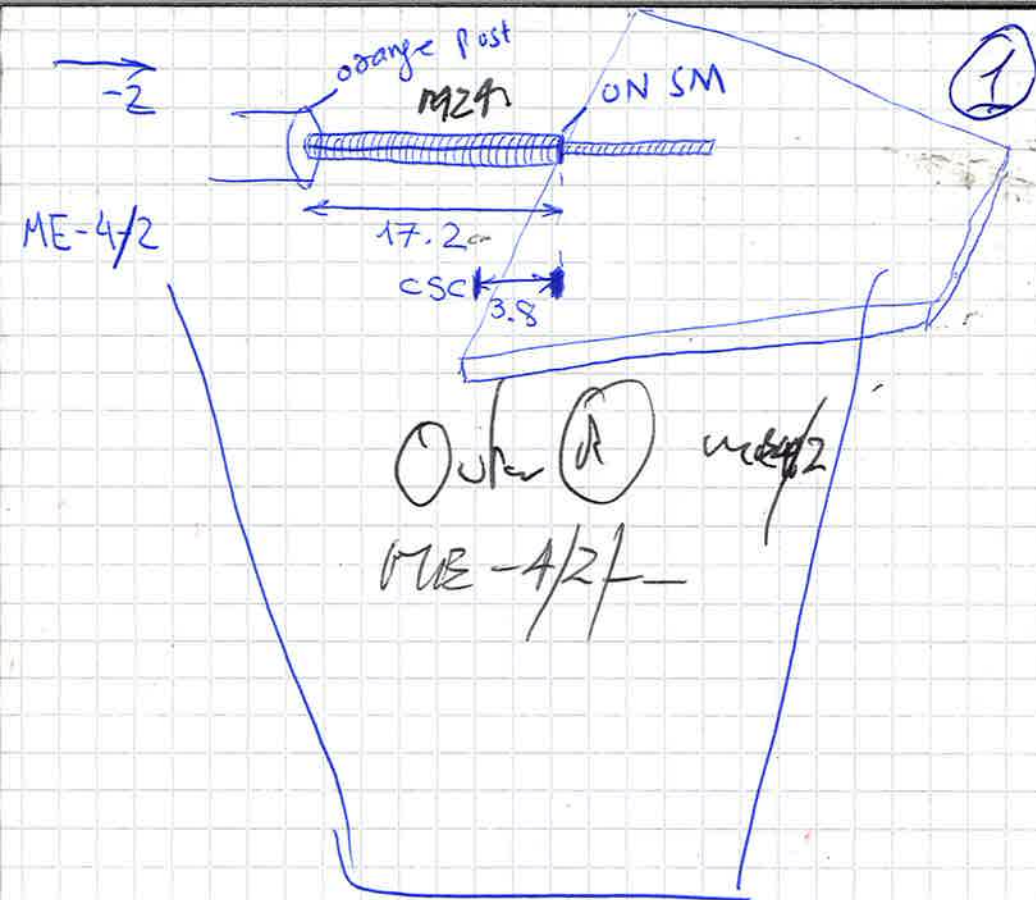
Verified and agreed
Ivan Mehar Jan
& Elbar

3 Nov. 2020.

Mehar







17.3
17.3
17.3
17.8
17.0
17.3

343 mm

343

~~325~~

320

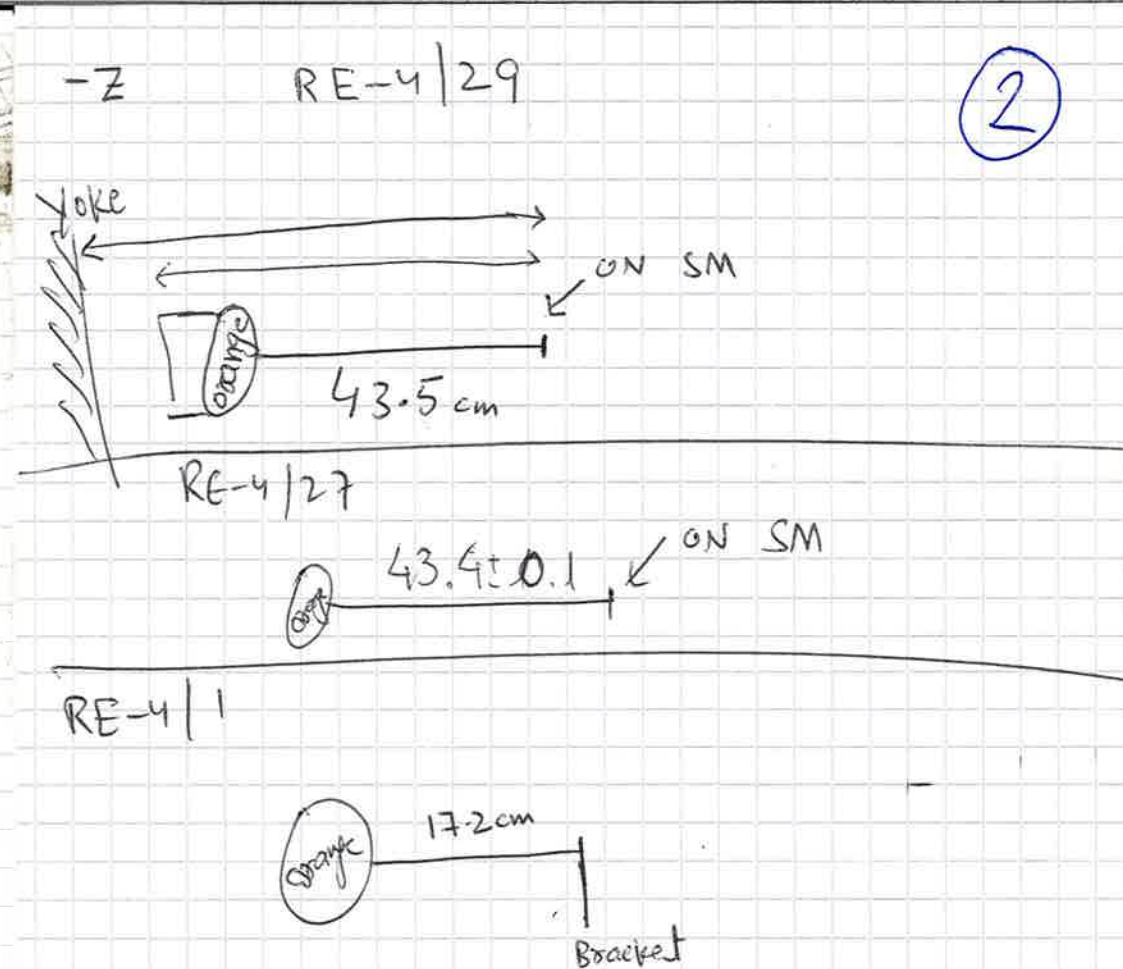
350

345

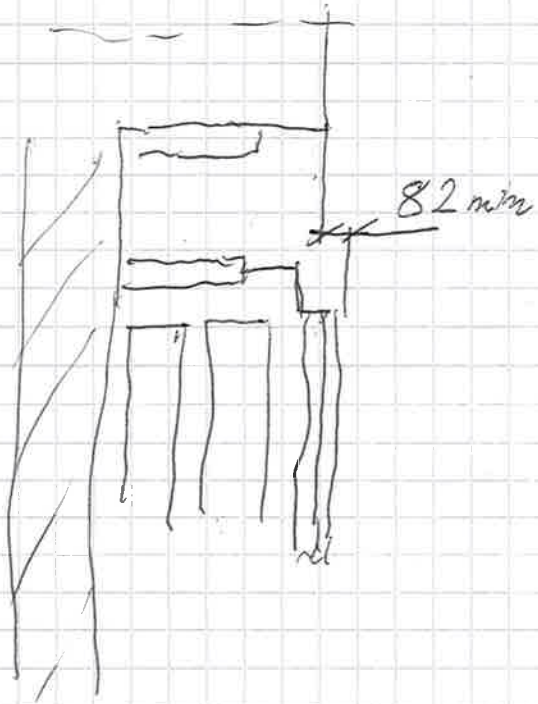
348 mm

→ RE-4/2/28

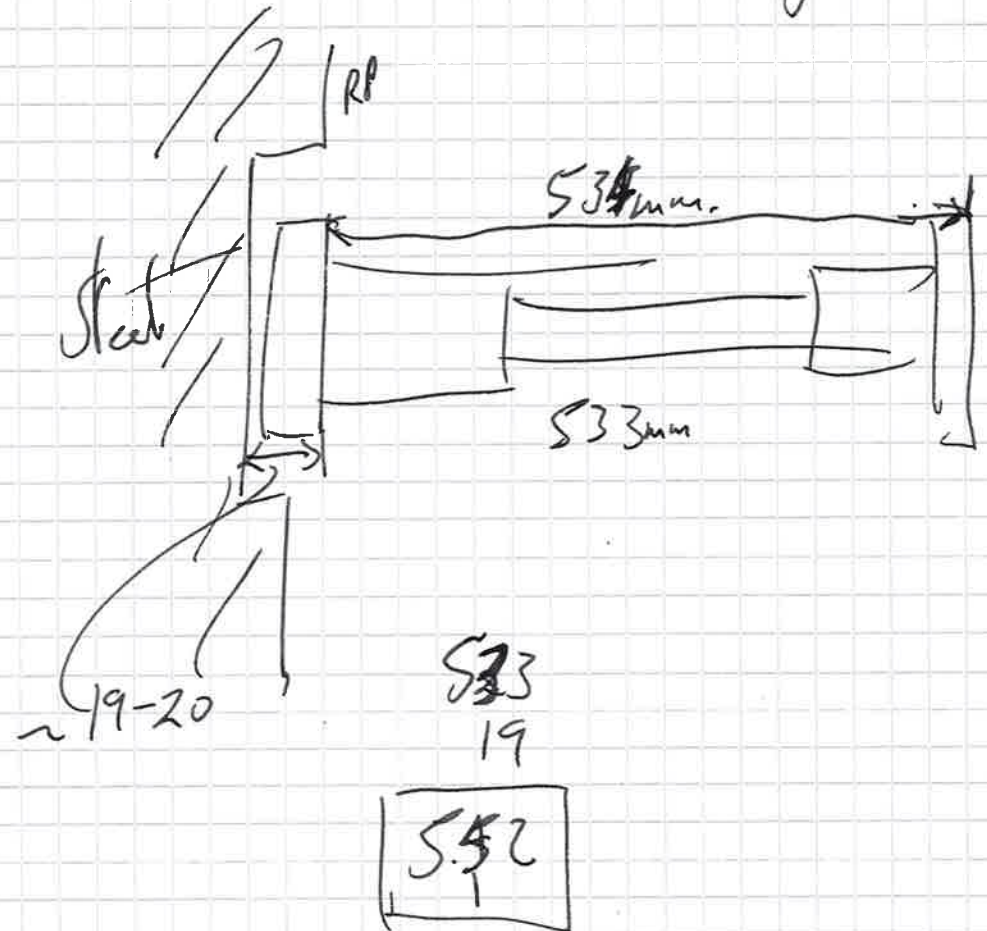
343 A = 7.
350.



③



ME - 4/2/29 ④
Inner R. main of csc

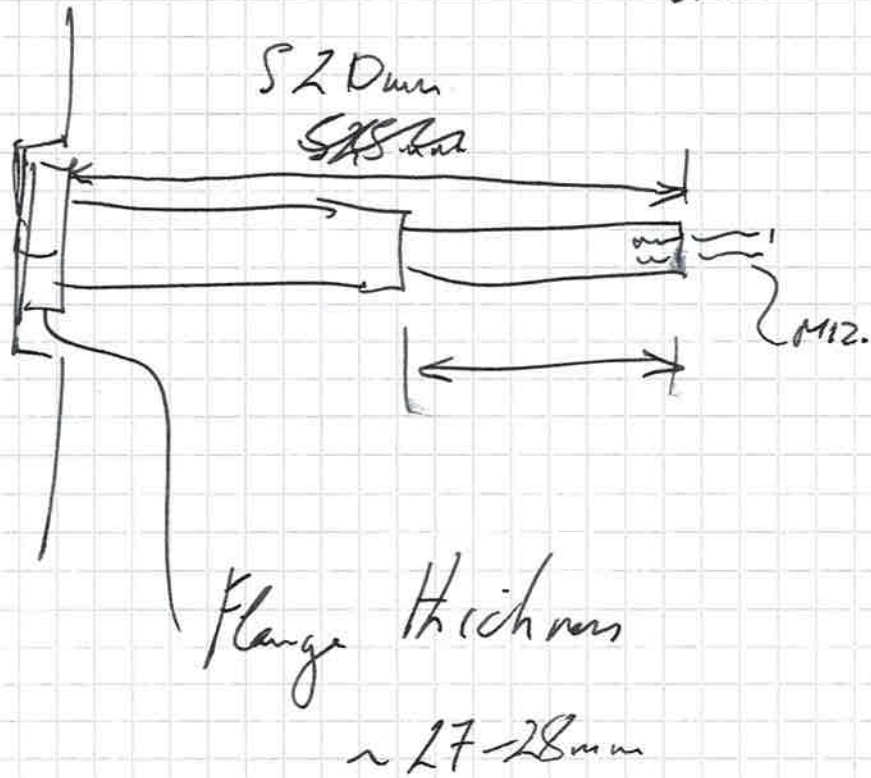


ME-4/2/30

Outer R.

Pocket = machined
steel.

(5)



Inner + Outer R.
Av. ~ 550mm.

S20
27

547

(6)

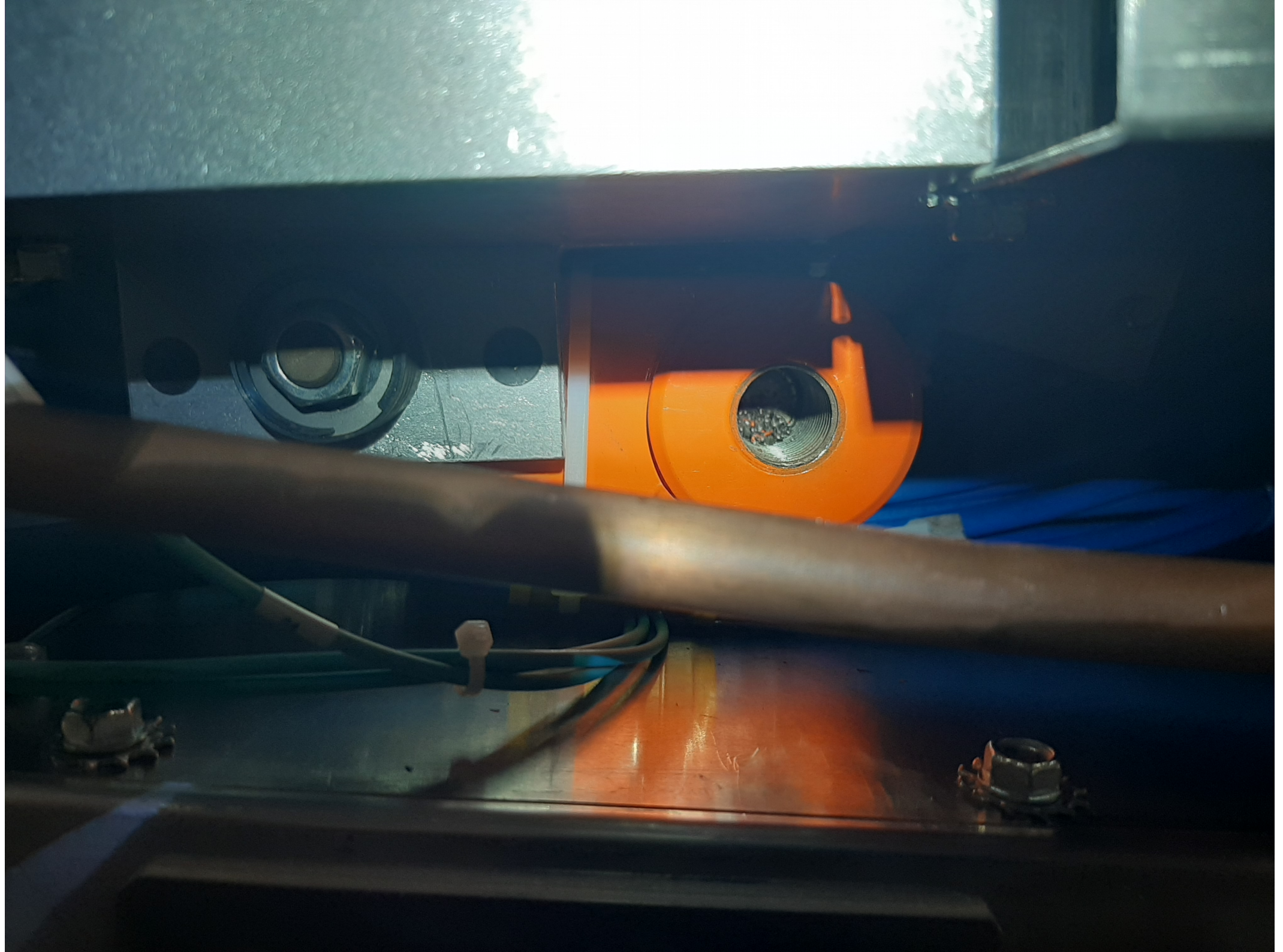
- Can find \geq for R12 #1
- .. \geq for R14 501
- Can find the wear plate 0110
- .. 0124 - 20mm high R
- .. 0124 - 20mm low R
- .. Diagonal for. Need
- Need .. method.
- Can find the removal for thinner. wash 0124
- .. method to adjust.
- P70 possible of LPMP in rotation around 0124

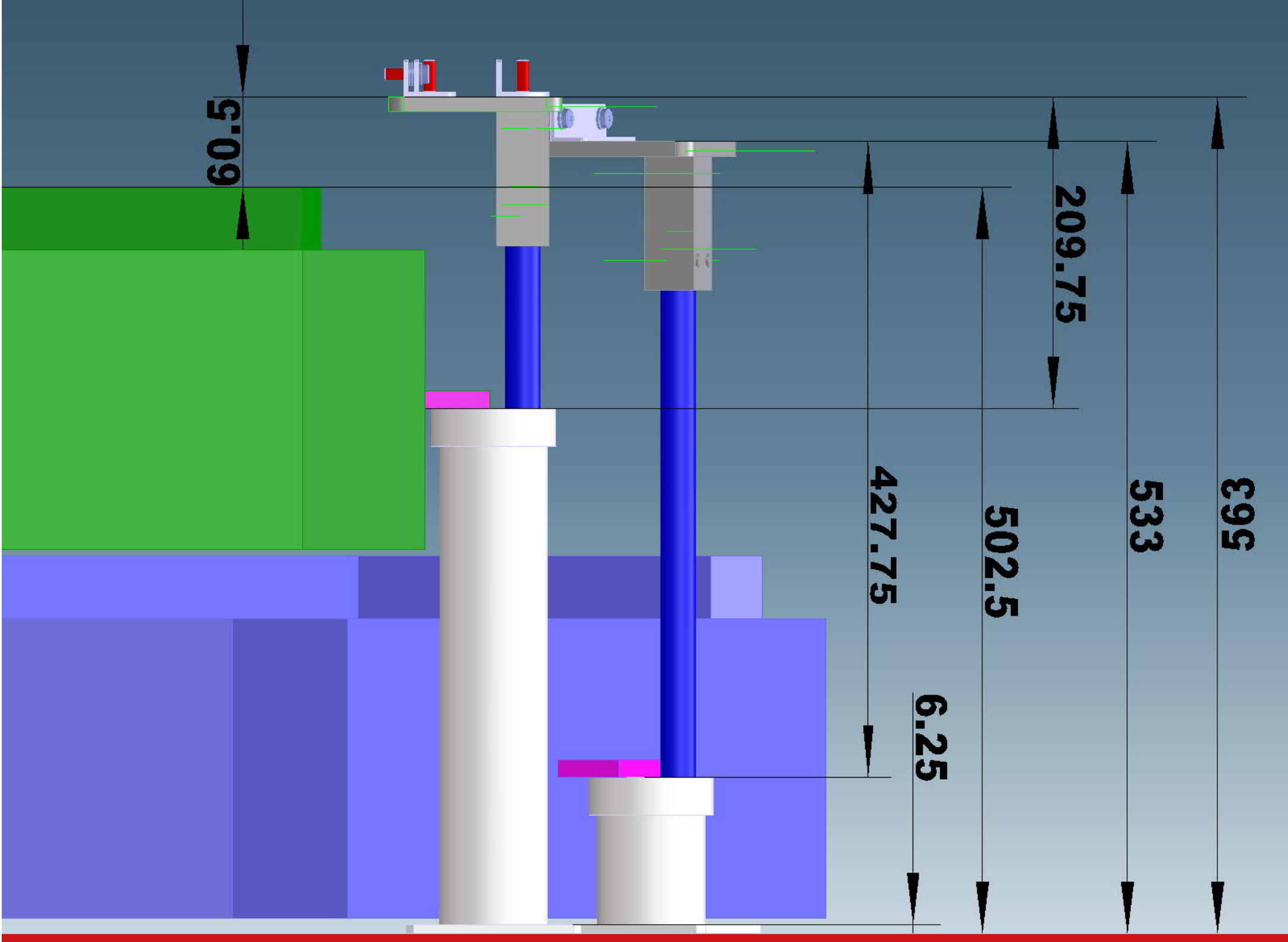
(7)

- Confin need to enlarge
M8 screws in ~~top~~
Mounting block at 'top' of
H24

- [M8 Confin need for.

$$27 \times 2 = 62 \text{ H24 Nuts.} \\ \text{or } 100.$$





List of modifications

1. For the bracket on the big radius the nuts M10 needs to be replaced whit 1 thick plate (8 to 12 mm)
2. All support rods needs to be shorter with 20mm.
3. For the bracket on the big radius the elliptical holes on the L piece needs to be re work for the new detectors (25mm ->27mm)
4. For all the brackets the counter bolts M8 need to be replaced with (M7) M6 or the holes need to be bigger with 0,5 mm to 1 mm.
5. For positioning of all the support rods 2 more M24 nuts are needed.
6. The aluminum spacers can be split to 3 or 4 peace's this well reduce the need for M24 to 1 more no 2 or 3.
7. The orientation of the brackets can be don whit diagonal flat bars (20x3mm or 30x3mm). Or whit the extra nut and the spacers.
8. The Small radius bracket needs to be remade with threaded rod for cantering the detector.
9. The Small radius bracket needs have separated L peace.
10. The modifications for additional nut and spacer and 20 mm cut are valid for the support rods in the small radius.
11. Threads on the orange posts needs to be cleaned and reapplied.
12. The CSC Gas pipe needs to be modified for for long term use of the brackets