

GENEVE, SUISSE

Date: 19th December 2016

From: Antje BEHRENS
Noemi BENI
Aurelie MAURISSET

EN/ACE
EP/UCM
EP/UCM

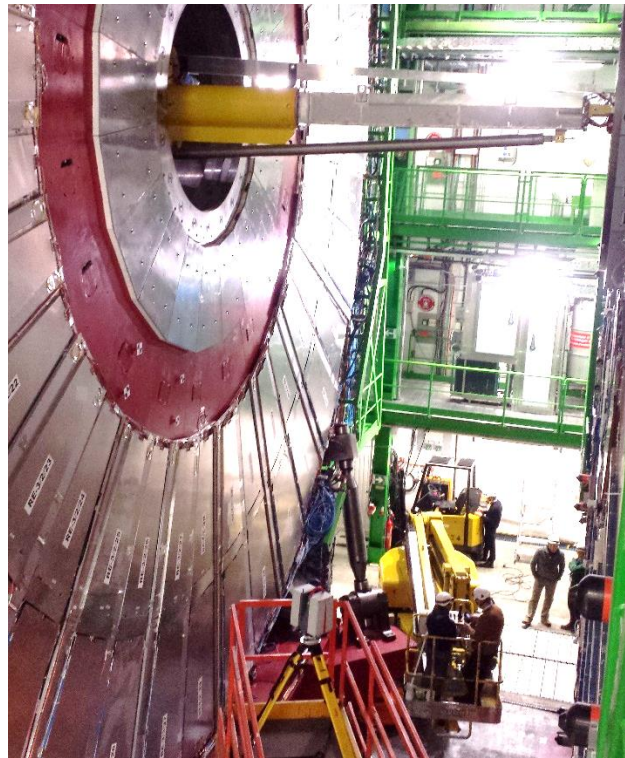
To : Austin BALL
Jean BOS
Salvatore BUONTEMPO
Ian CROTTY
Andrea GADDI
Jean-Christophe GAYDE
Nebojsa SMILJKOVIC
Elena VOEVODINA
Wolfram ZEUNER

CMS-I-UR-0274
EDMS: 1751638

CMS – RE-3/1

SCANNING OF YE-2 & YE-3 FOR RE-3/1 INTEGRATION STUDIES

CERN – UXC55 – DECEMBER 2016



- Scanning campaign for RE-3/1 integration studies -

The EDMS document 1751638 containing this report is available at the following address:
<https://edms.cern.ch/document/1751638>

TABLE OF CONTENTS

1	INTRODUCTION	2
2	COORDINATE SYSTEM	3
2.1	YE-2 Coordinate system	3
2.2	YE-3 Coordinate system	4
2.3	CMS Physicist coordinate system	5
3	MEASUREMENT IN UXC55	6
3.1	Theodolite measurements	6
3.2	Laser scanning measurement	6
4	PROCESSING OF THE DATA – RESULTS	7
4.1	Pre-treatment under Cyclone software	7
4.2	Additional treatment under Geomagic Studio Software	7
4.3	Resulting files for CATIA software treatment	8

1 INTRODUCTION

Following a request from Ian CROTTY and Nebojsa SMILJKOVIC, in order to determine the available space for RE-3/1 RPC chambers, surfaces between YE-2 and YE-3 around the CSC chamber ME-3/1/13 (below the beampipe on far side) have been measured with the laser scanner. Traditional measurements with theodolite have also been done to set the scan data onto local Yoke Endcap coordinate system.

This report describes the work done by survey team. As a result, point clouds compatible with CATIA software have been transferred to Nebojsa SMILJKOVIC from the CMS integration office. The point clouds (igs. files) are available on dfs at the following address:

\\cern.ch\dfs\Support\SurveyingEng\Instruments\LaserScanner\DataSets\Experiments\CMS\161219_RE3-1_ZM_Endcaps

NB: The full point cloud data measured are still available at the survey office, in case of need of another part of the measured area (in CMS/Scans survey folder on dfs)

NB: Measurements of the M12 holes on YE-3 using laser scanner targets failed.

Measurements have been done at CERN – UXC55 on 19th December 2016.

Accuracy of each individual point: XYZ: +/- 3 mm at one sigma level (estimated value) Results are provided in Yoke Endcap YE-2 or YE-3 local coordinate system

Data acquisition with the 3D laser scanner took 1.5 hour in UXC55 cavern. Complete post-processing treatment of the data took 3 working days in office.
--

2 COORDINATE SYSTEM

2.1 YE-2 Coordinate system

The calculation has been done in the YE-2 local coordinate system given by the photogrammetry of the Yoke Endcap YE-2, made on the reference holes. For further details concerning this photogrammetry, please see the EDMS report CMS-SY-UR-0087 version 2.

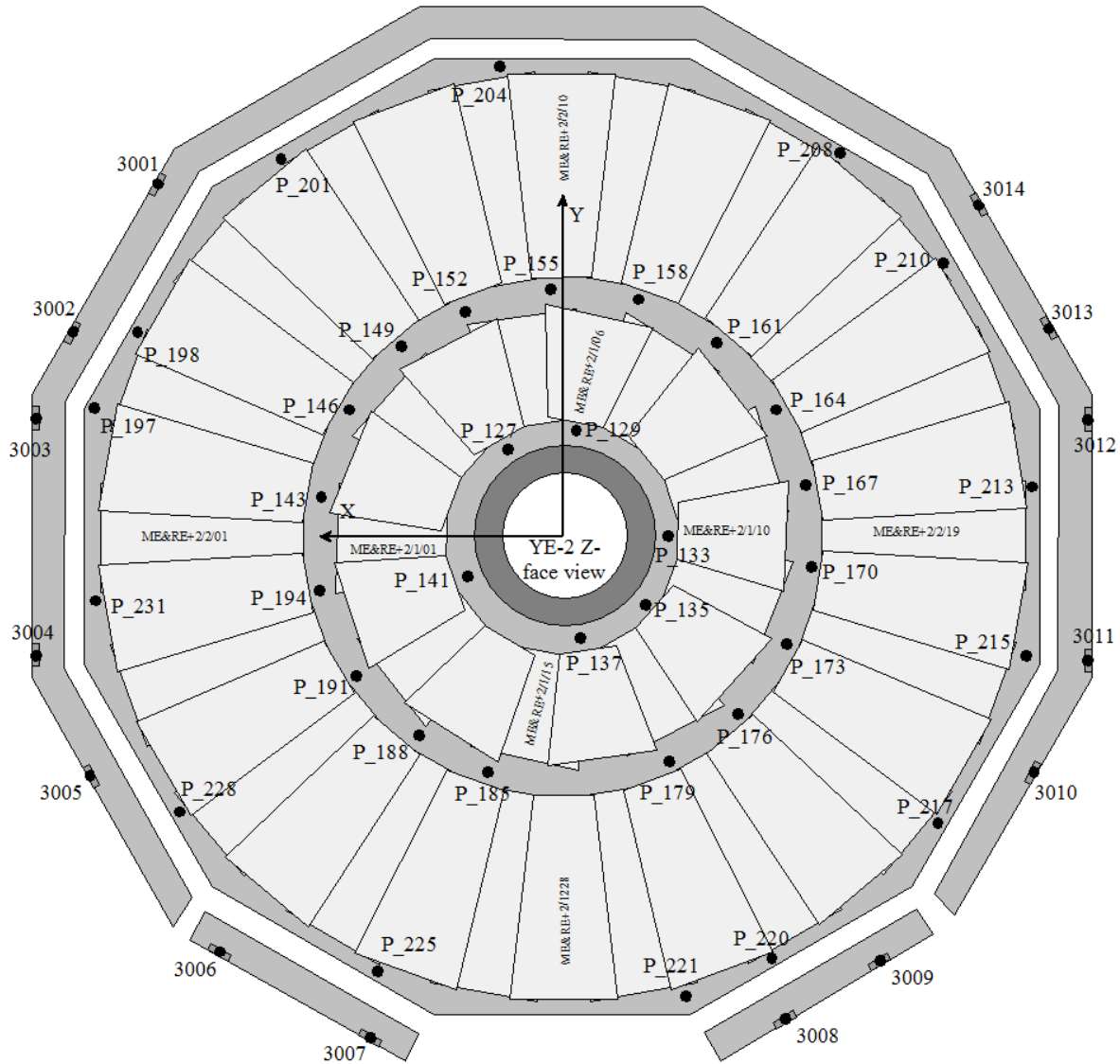


Figure 1 Face view of the YE-2 Z-

2.2 YE-3 Coordinate system

The calculation has been done in the YE-3 local coordinate system given by the photogrammetry of the Yoke Endcap YE-3, made on the reference holes. For further details concerning this photogrammetry, please see the EDMS report CMS-SG-UR-0088.

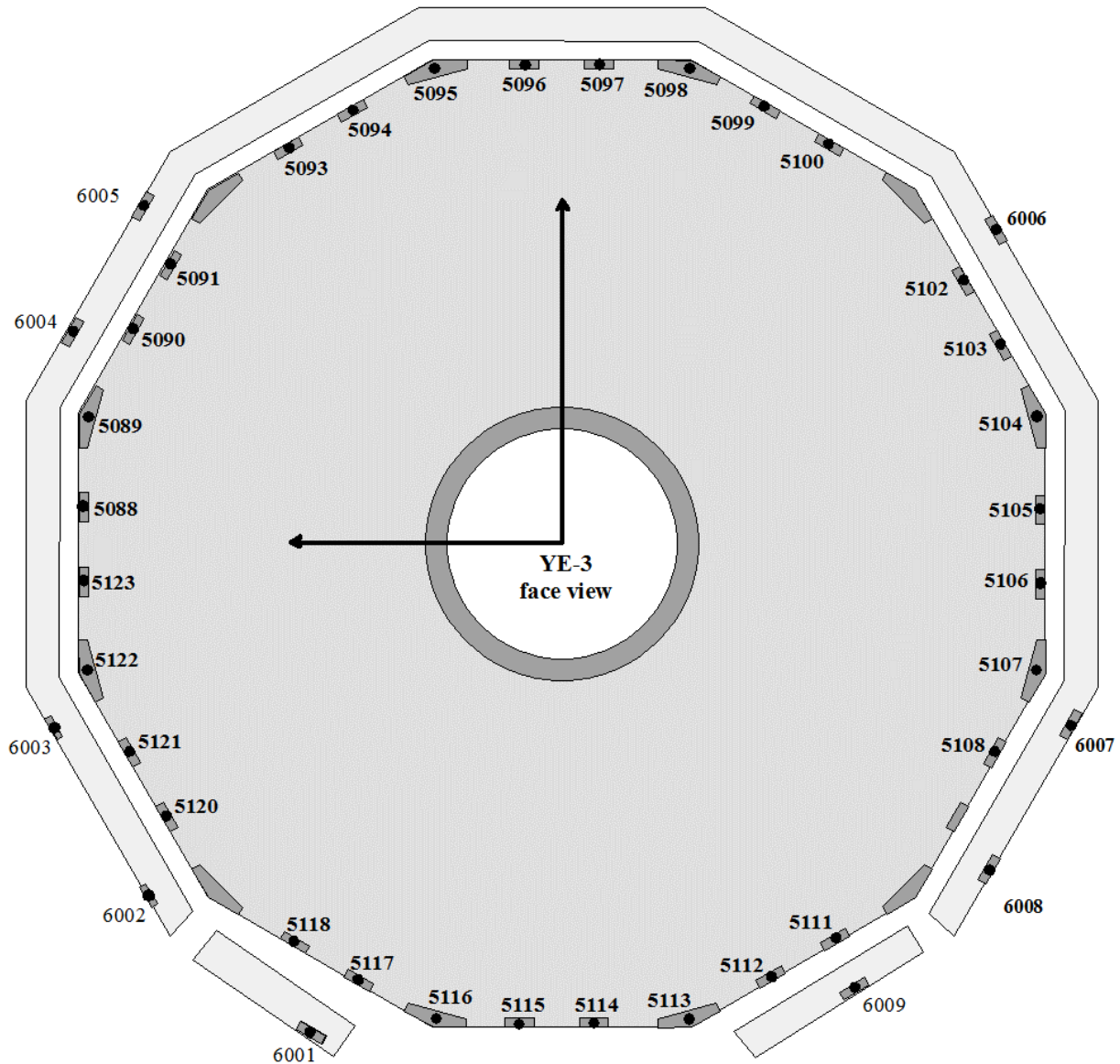


Figure 1 : Face view of the YE-3 Z-

2.3 CMS Physicist coordinate system

The **CMS system** is a direct Cartesian system defined as:

- The origin is the Interaction Point of CMS (IP5)
- The XCMS axis is the radial axis and positive to the LHC center.
- The Y CMS axis is elevation and perpendicular to the Z CMS axis and positive to the top.
- The Z CMS follows the beam line and positive from 56 towards 54.

The local geometry of the cavern UXC55 is a local transformation on the geometry of the LHC delivered by EN/ACE/SU as for the end of LS1

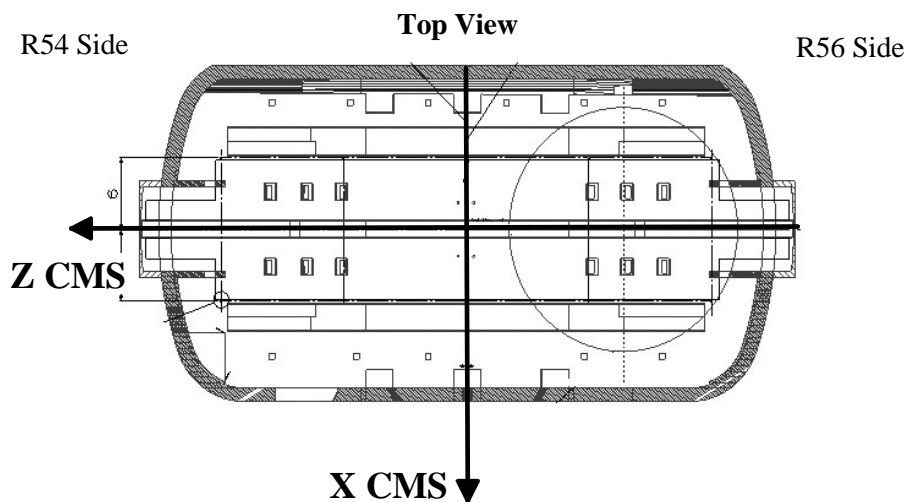


Figure 1. Top view of the UXC55 and the system CMS

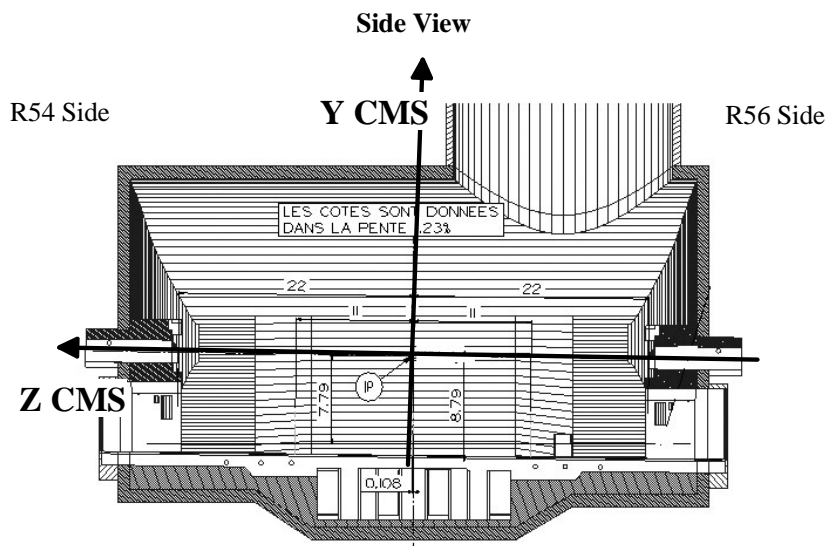


Figure 2. Side view of the UXC55 and the System CMS

3 MEASUREMENT IN UXC55

3.1 Theodolite measurements

The position of YE-2 and YE-3 in UXC55 cavern have been measured by theodolite (i.e. traditional method) to transfer the scan data from CMS physicist coordinate system onto local yoke endcap coordinate system by best-fit on survey reference holes of each yoke endcap.

The following table gives the measured coordinates of the survey reference holes and the calculated position of the centre of each yoke endcap in the CMS physicist coordinate system.

Survey reference holes on YE-2 (CMS Phy)			
NAME	Xphy [m]	Yphy [m]	Zphy [m]
YEM2_Centre	-0.0101	-0.0078	-12.6792 [*]
YEM2_3009	-4.7438	-5.8858	-13.2166
YEM2_3011	-7.2512	-1.1195	-13.2127
YEM2_3012	-7.2522	0.4689	-13.2126
YEM2_3013	-7.2170	2.4365	-13.2103

Survey reference holes on YE-3 (CMS Phy)			
NAME	Xphy [m]	Yphy [m]	Zphy [m]
YEM3_Centre	-0.0002	-0.0016	-17.5397 [*]
YEM3_6004	6.8701	2.9986	-18.3858
YEM3_6005	5.9647	4.5564	-18.3904
YEM3_6006	-6.0841	4.3742	-18.3204

[*] Calculated by best-fit

The following table gives the coordinates of the survey reference holes on each yoke endcap in the local yoke endcap coordinate system. For further details about those values, please see EDMS report CMS-SG-UR-0087 v2 for YE-2 and EDMS report CMS-SG-UR-0088 for YE-3.

Survey reference holes on YE-2 (Local YE-2)			
NAME	Xloc [m]	Yloc [m]	Zloc [m]
YEM2_Centre	0.0000	0.0000	0.0000
YEM2_3009	-4.7331	-5.8761	-0.5619
YEM2_3011	-7.2387	-1.1093	-0.5707
YEM2_3012	-7.2391	0.4793	-0.5705
YEM2_3013	-7.2032	2.4471	-0.5679

Survey reference holes on YE-3 (Local YE-3)			
NAME	Xloc [m]	Yloc [m]	Zloc [m]
YEM3_Centre	0.0000	0.0000	0.0000
YEM3_6004	6.8748	3.0053	-0.7917
YEM3_6005	5.9693	4.5632	-0.7957
YEM3_6006	-6.0814	4.3771	-0.8007

All coordinates are given at the centre of the survey target (20mm offset from contact surface). Accuracy (X,Y, Z) +/-1mm at one sigma level.

3.2 Laser scanning measurement

The surfaces between YE-2 and YE-3 have been measured with the laser scanner Leica HDS6200 of EN/ACE-SU section from one scan station. The scan data has been set in the CMS physicist coordinate system using laser scanner reference targets distributed in the area on the survey geodetic points (offset of 90 mm in the Zsu direction (local vertical) compared to the traditional survey target (Taylor & Hobson Ball)). Geodetic network has been measured during Winter 2015/2016 by theodolite. Targets have been removed after the measurements.

Coordinates of the targets in the CMS physicist coordinate system determined by theodolite:

Geodetic survey points used for data transfer onto CMS physicist coordinate system							
NAME	Xphy [m]	Yphy [m]	Zphy [m]	NAME	Xphy [m]	Yphy [m]	Zphy [m]
NOM1	12.8822	-7.3750	-13.6372	F2M1	-12.9053	-0.0853	-14.2111
FOP1	-10.0035	-7.2639	-17.5829	F2P1	-10.1810	-0.0694	-17.4463

Coordinates are given at the centre of the laser scanner targets in the CMS physicist coordinate system. Accuracy (X,Y, Z) +/-1mm at one sigma level.

Final point clouds result from 1 position of the laser scanner (scan station).

The following sorts of point clouds have been produced:

- A “medium” resolution scan with the maximum field of view of the scanner ($360^{\circ} \times 270^{\circ}$)
- a “high” resolution scan on the YE-2 and YE-3 quarter around CSC chamber ME-3/1/13
- “target” scan: for each laser scanner reference target not well measured in the previous point cloud, to determine the target centre, to set the scan data in CMS physicist coordinate system.

4 PROCESSING OF THE DATA – RESULTS

4.1 Pre-treatment under Cyclone software

The laser scanning measurement gives a point cloud in local coordinate system, linked to the laser scanner device. During the pre-treatment in Cyclone software, the point cloud is transferred by best-fit on geodetic survey targets onto the CMS physicist coordinates system.

Steps in Cyclone software:

1. Import in the scanning project of a txt file containing the coordinates in the CMS physicist coordinate system of the HDS targets inserted in the geodetic survey brackets
2. Best-fit calculation of the scan data onto the txt file to transfer the scan data in the CMS physicist coordinate system. For this measurement, the average error of the best-fit transformation is ± 1.8 mm and the maximum error is of ± 3 mm.
3. Export of the point cloud in XYZ files format (compatible with CATIA and Geomagic).

4.2 Additional treatment under Geomagic Studio Software

The full point cloud has been cleaned manually (removal of not interesting parts, measurement errors) and also automatically (“select disconnected” and “select outliers”). Then, the point cloud has been divided in two Geomagic files (one for each yoke endcap).

Steps in Geomagic for each yoke endcap file:

1. Duplication of the point cloud to obtain 2 identical point clouds:
 - In one point cloud, sampling of the data to keep a point each 1 cm
 - In the other point cloud, removal of the areas not around CSC chamber ME-3/1/13 and no sampling, to keep full point cloud density from the measurement.
2. Creation of two additional point clouds containing only “features” points, to insert the data from theodolite measurements.
 - One point cloud with theodolite values in CMS physicist coordinate system
 - One point cloud with theodolite values in local yoke endcap coordinate system (YE-2 or YE-3).
3. Assembly of 3 point clouds: the one sampled at 1 cm density, the extract with full density around CSC chamber ME-3/1/13 and the points in CMS physicist coordinate system
4. Best-fit calculation of the point cloud assembly onto the “features” point cloud in local yoke endcap coordinate system (“RPS Alignment”) to transfer the data to that system. For YE-2, the average error of the best-fit transformation is ± 0.2 mm and the maximum error is of ± 0.2 mm. For YE-3, the average error of the best-fit transformation is ± 0.8 mm and the maximum error is of ± 1.1 mm.
5. Export of the point cloud and of the “features” points in igs files format

4.3 Resulting files for CATIA software treatment

Point cloud, survey reference points and yoke endcap centre have been exported in igs file format for import in CATIA. All data are stored on dfs public folder at the following address:

\\cern.ch\dfs\Support\SurveyingEng\Instruments\LaserScanner\DataSets\Experiments\CMS\161219_RE3-1_ZM_Endcaps

➤ *Content of the folder for link indicated above:*

- 161219_YEM2_RE31.igs: point cloud data of the YE-2
- 161219_YEM2_RE31_Point_Features.igs: survey reference hole and YE-2 centre
- 161219_YEM3_RE31.igs: point cloud data of the YE-3
- 161219_YEM3_RE31_Point_Features.igs: survey reference hole and YE-3 centre

Data are provided in meters in local yoke endcap coordinate system (YE-2 or YE-3)

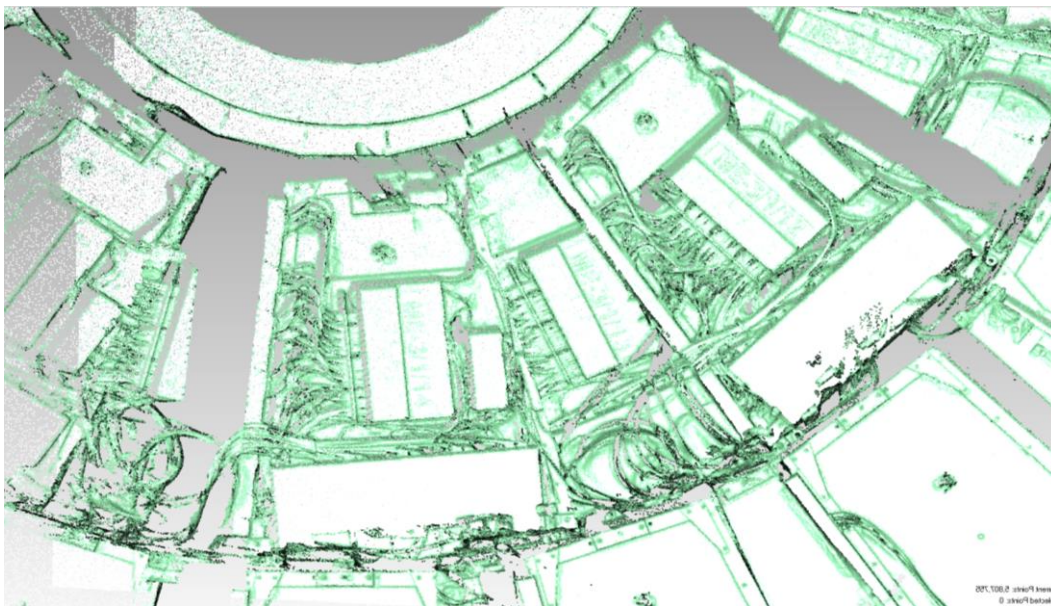


Figure 3. Extract of YE-2 point cloud, around CSC chamber ME-3/1/13

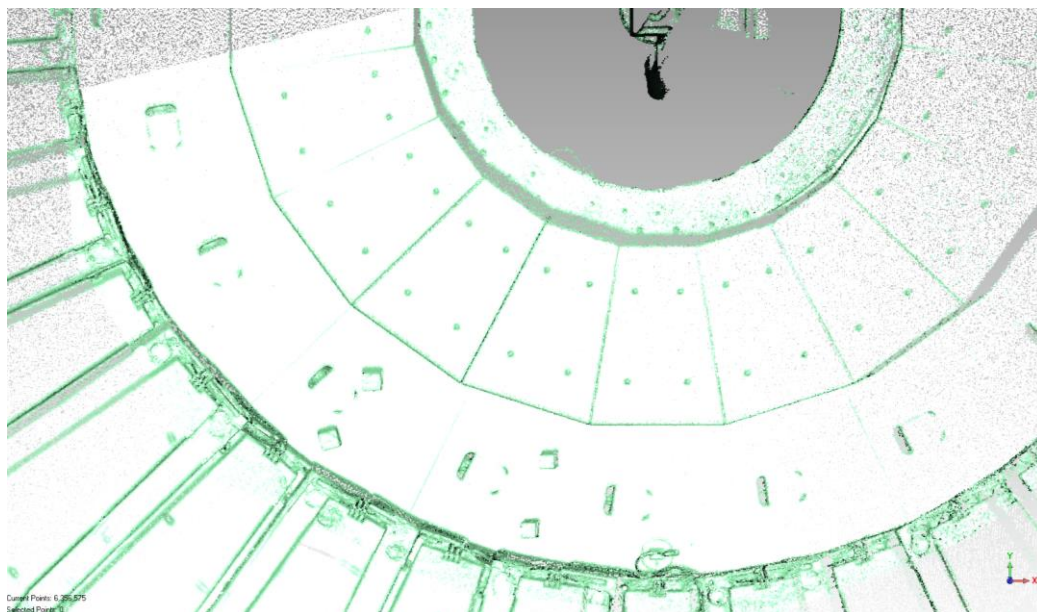


Figure 4. Extract of YE-3 point cloud, surface in front of CSC chamber ME-3/1/13