

RPCs background estimation

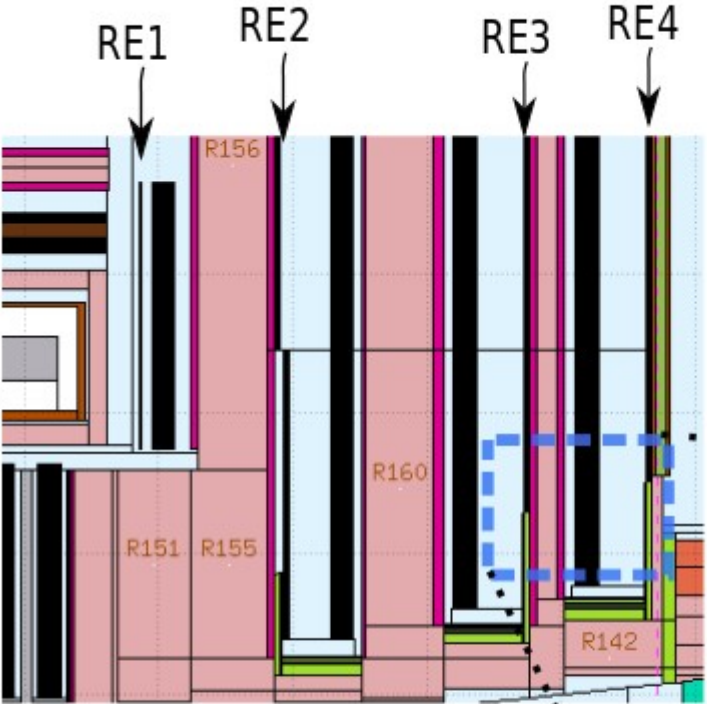
Severiano Carpinteyro Bernardino^[1], Alfredo Castaneda^[2]

^[1] University of Puebla

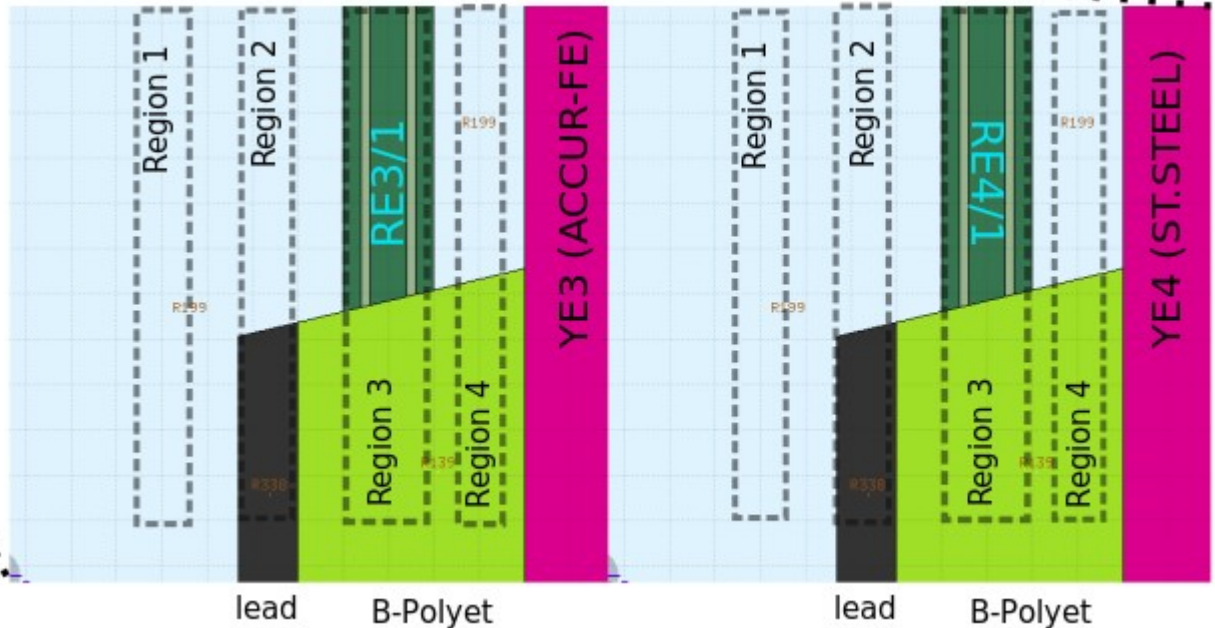
^[2] Texas A&M University

30 March 2017

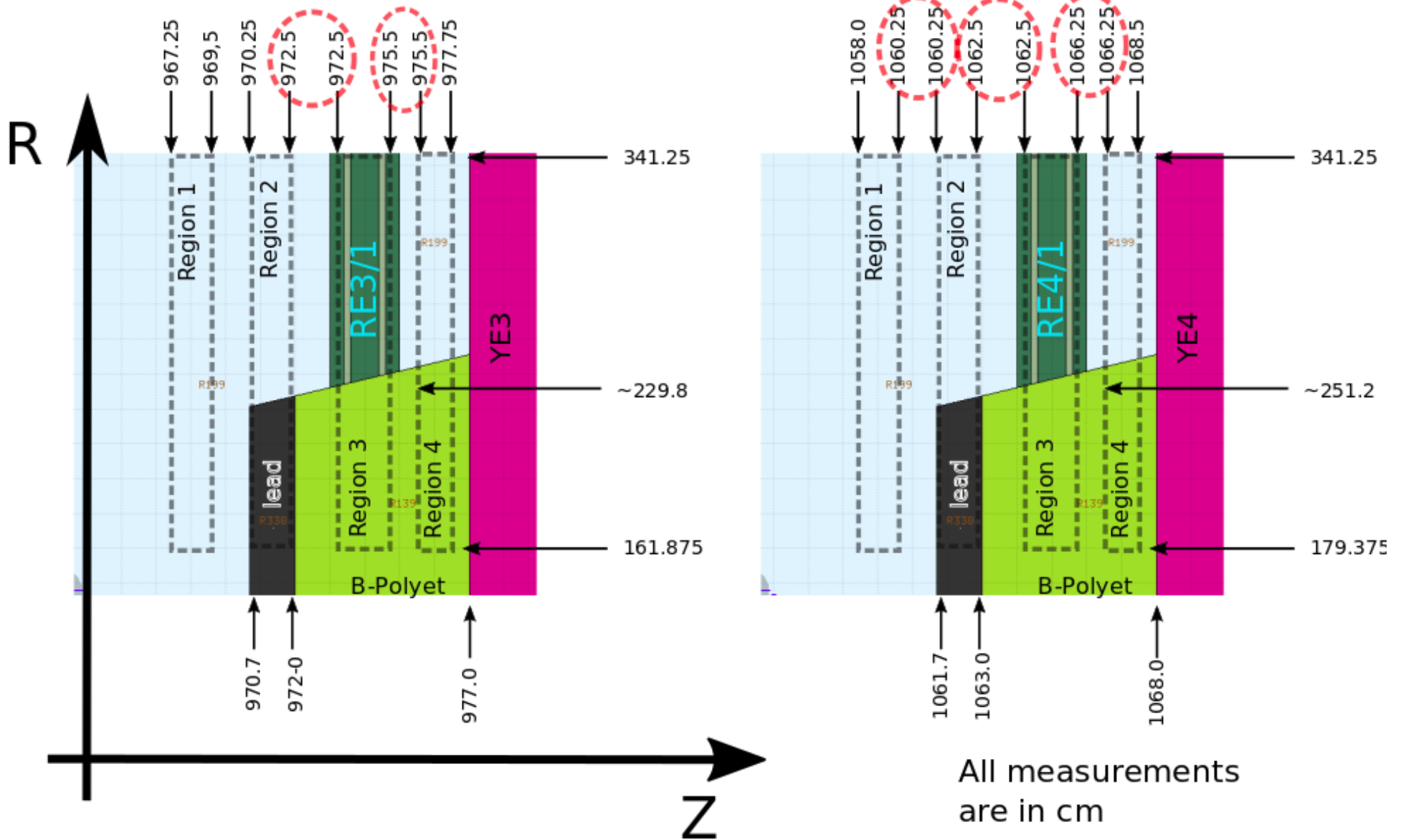
RE3/1 & RE4/1 regions



Background studies in different regions near, and including RE3/1 & RE4/1 to understand the background behavior near to RE3/1 & RE4/1.

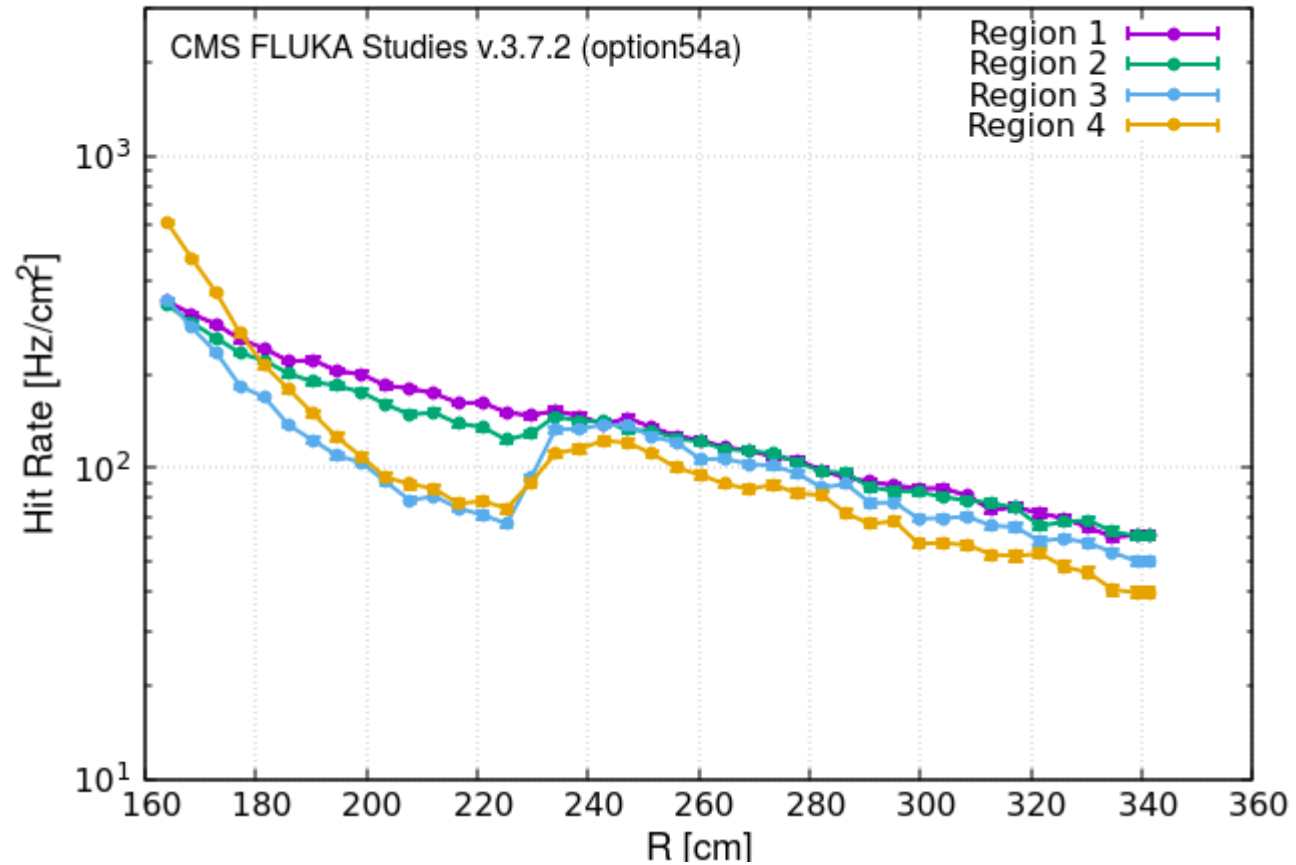


RE3/1 & RE4/1 regions



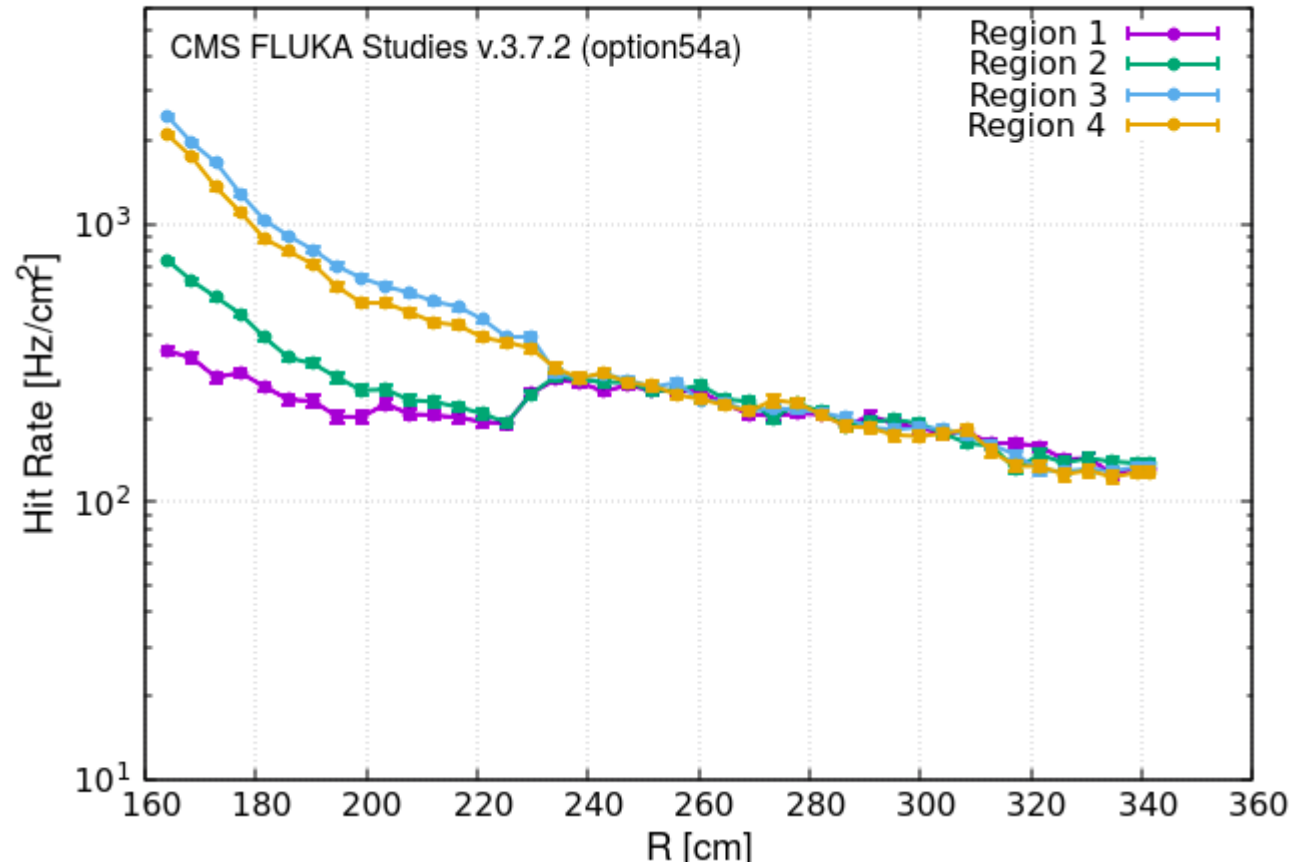
RE3/1 Rate Neutrons

Background neutron Hit Rate in RE3/1 (Phase-2) $L=5 \times 10^{34} \text{cm}^2 \text{s}^{-1}$



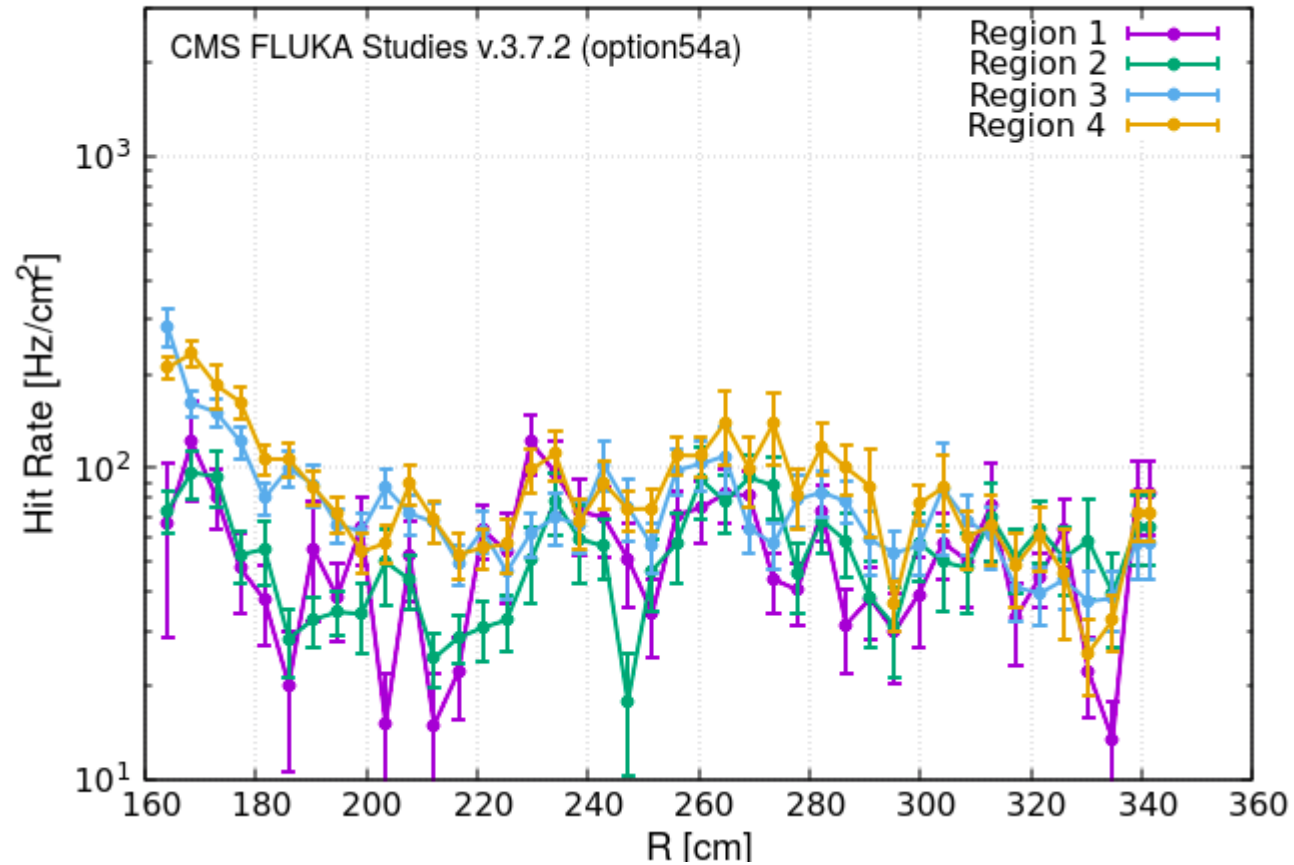
RE3/1 Rate Photons

Background photon Hit Rate in RE3/1 (Phase-2) $L=5 \times 10^{34} \text{cm}^{-2} \text{s}^{-1}$



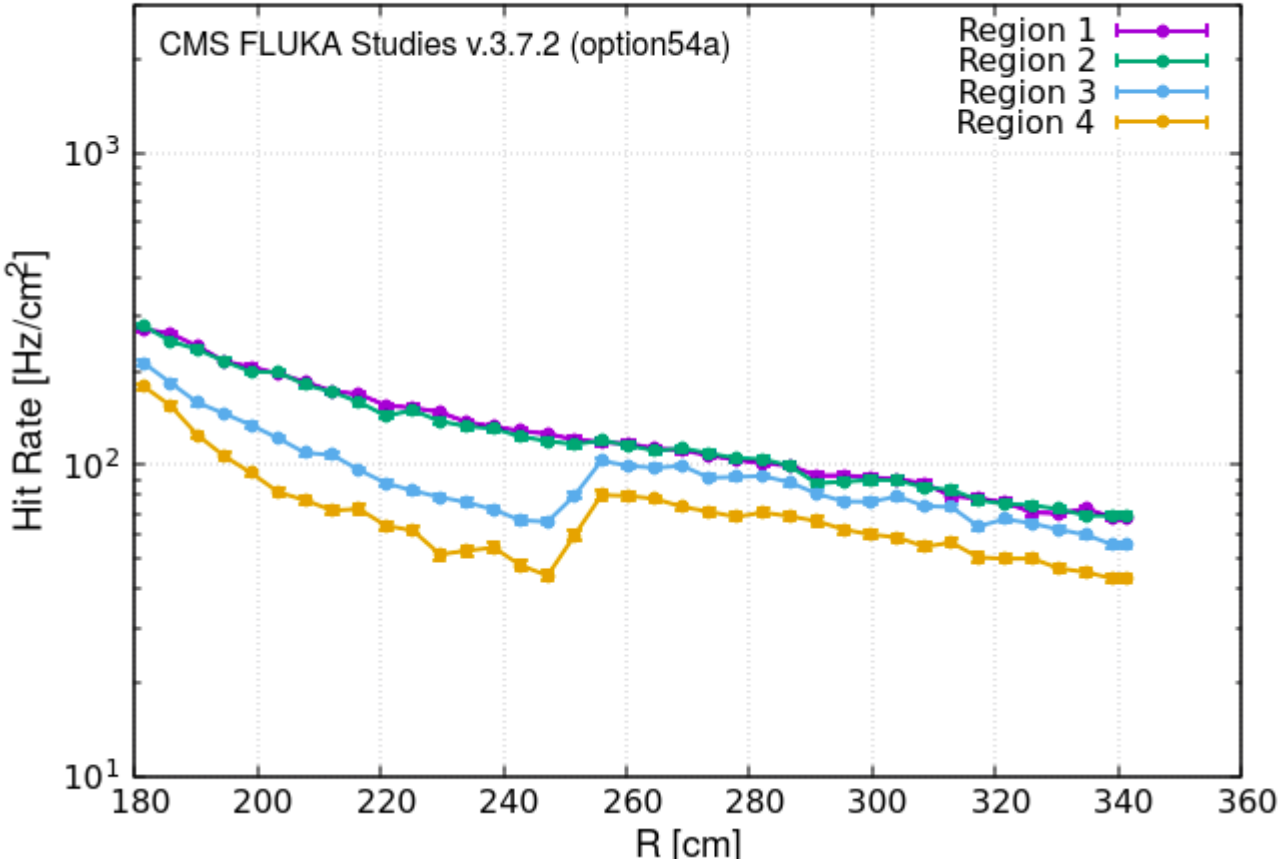
RE3/1 Rate Electrons-Positrons

Background e+/e- Hit Rate in RE3/1 (Phase-2) $L=5 \times 10^{34} \text{cm}^2 \text{s}^{-1}$



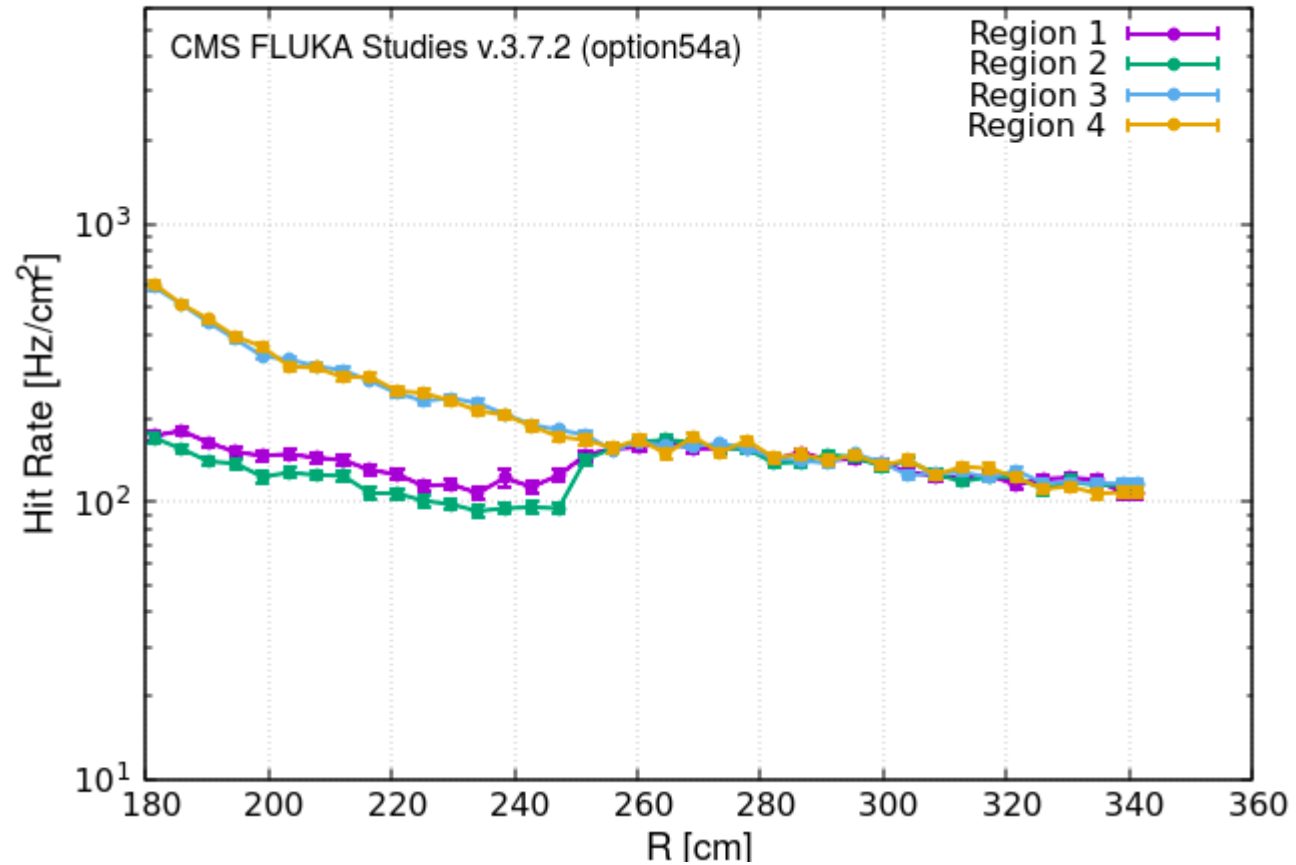
RE4/1 Rate Neutrons

Background neutron Hit Rate in RE4/1 (Phase-2) $L=5 \times 10^{34} \text{cm}^2 \text{s}^{-1}$



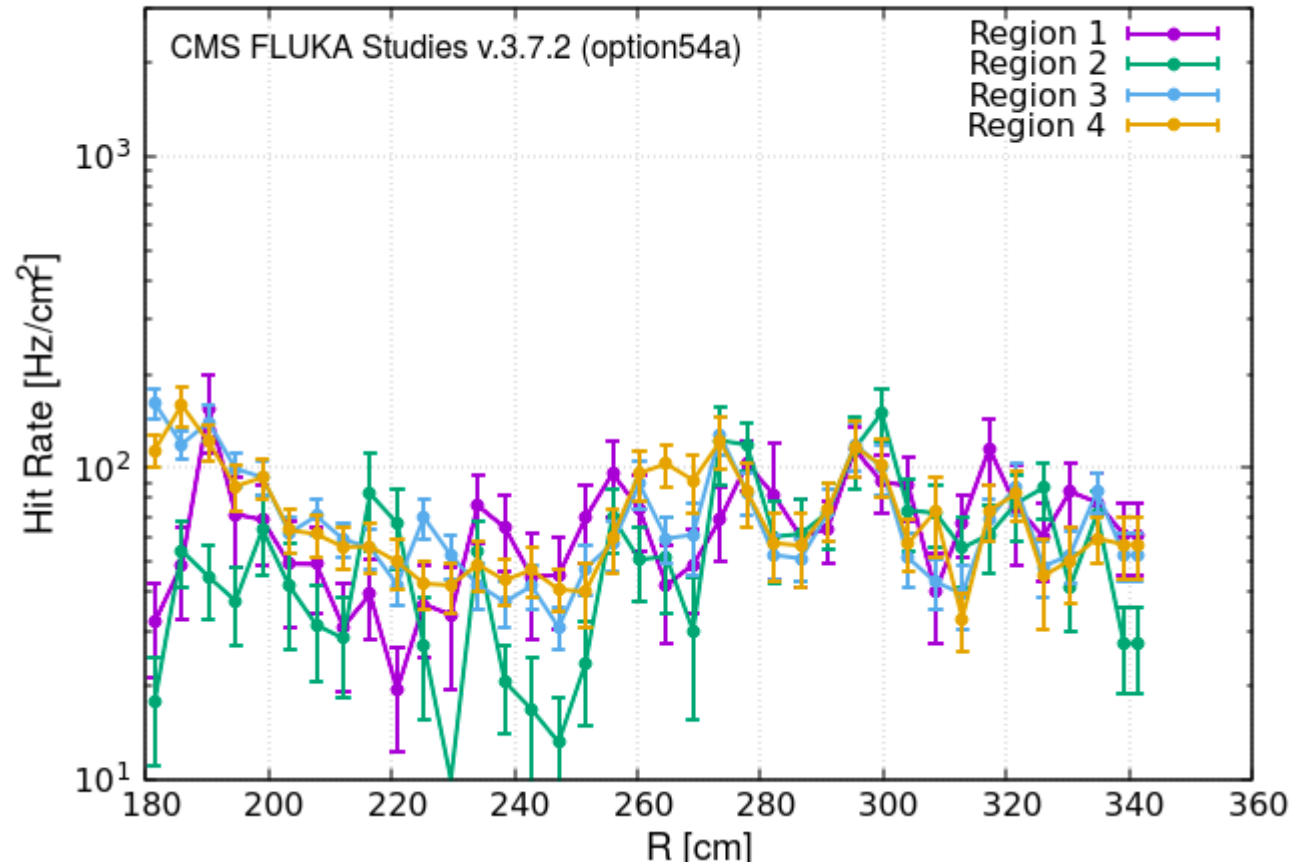
RE4/1 Rate Photons

Background photon Hit Rate in RE4/1 (Phase-2) $L=5 \times 10^{34} \text{cm}^{-2} \text{s}^{-1}$



RE4/1 Rate Electrons-Positrons

Background e+/e- Hit Rate in RE4/1 (Phase-2) $L=5 \times 10^{34} \text{cm}^2 \text{s}^{-1}$



Thanks

Backup

