

Target & Support

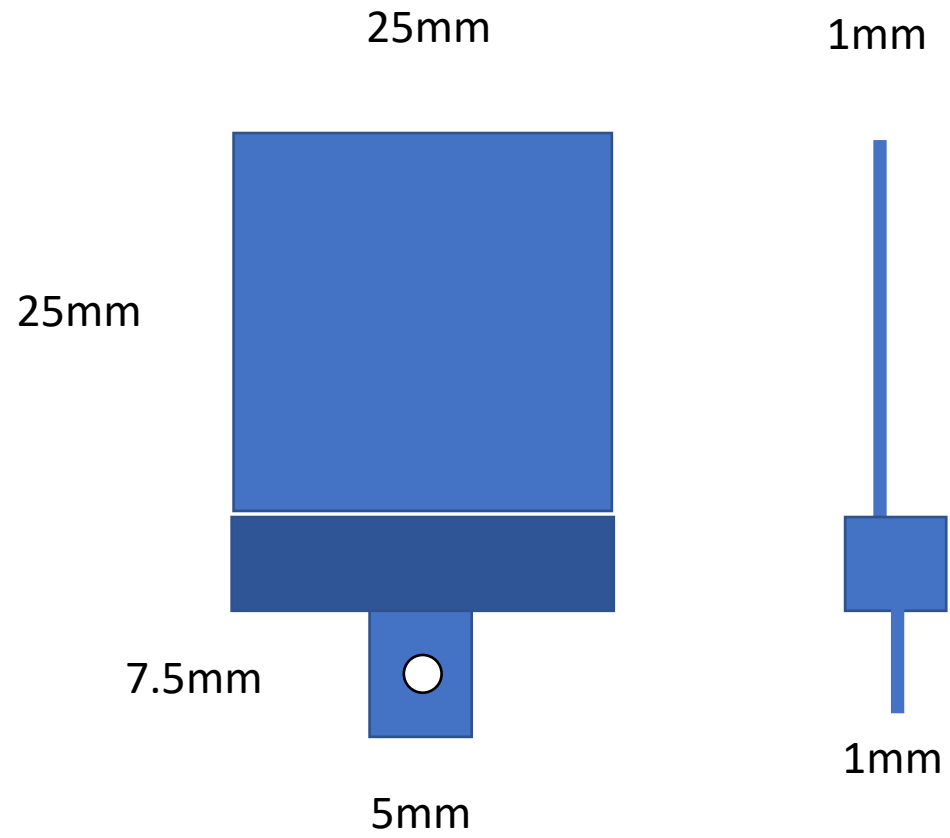
First attempt

Ian

18 Nov2022

Target sketch

Very approx



Principle required actions

Target simulation sheared from sheet alu.

Target pressed into slot with soft metal, as a clamp.

Small 1mm tab, delicate milled from the 5mm sheet.

Slot across 5mm sheet width.

Support width given to 0.1mm (24.9actual as opposed to 25.0 nominal)

Securing hole dia. 2.3 drilled before milling of 1mm tab.

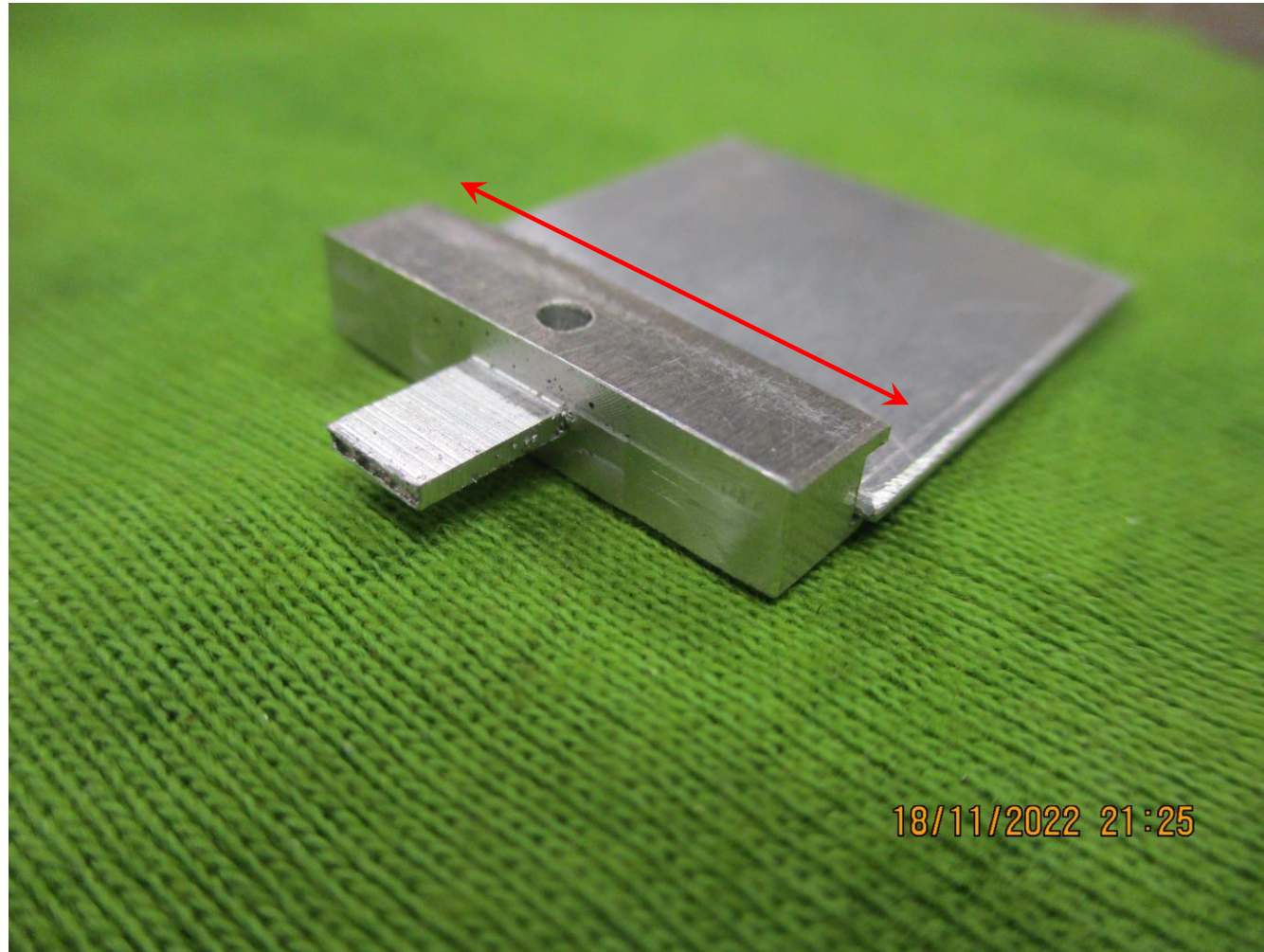
Mistake with above action

General View

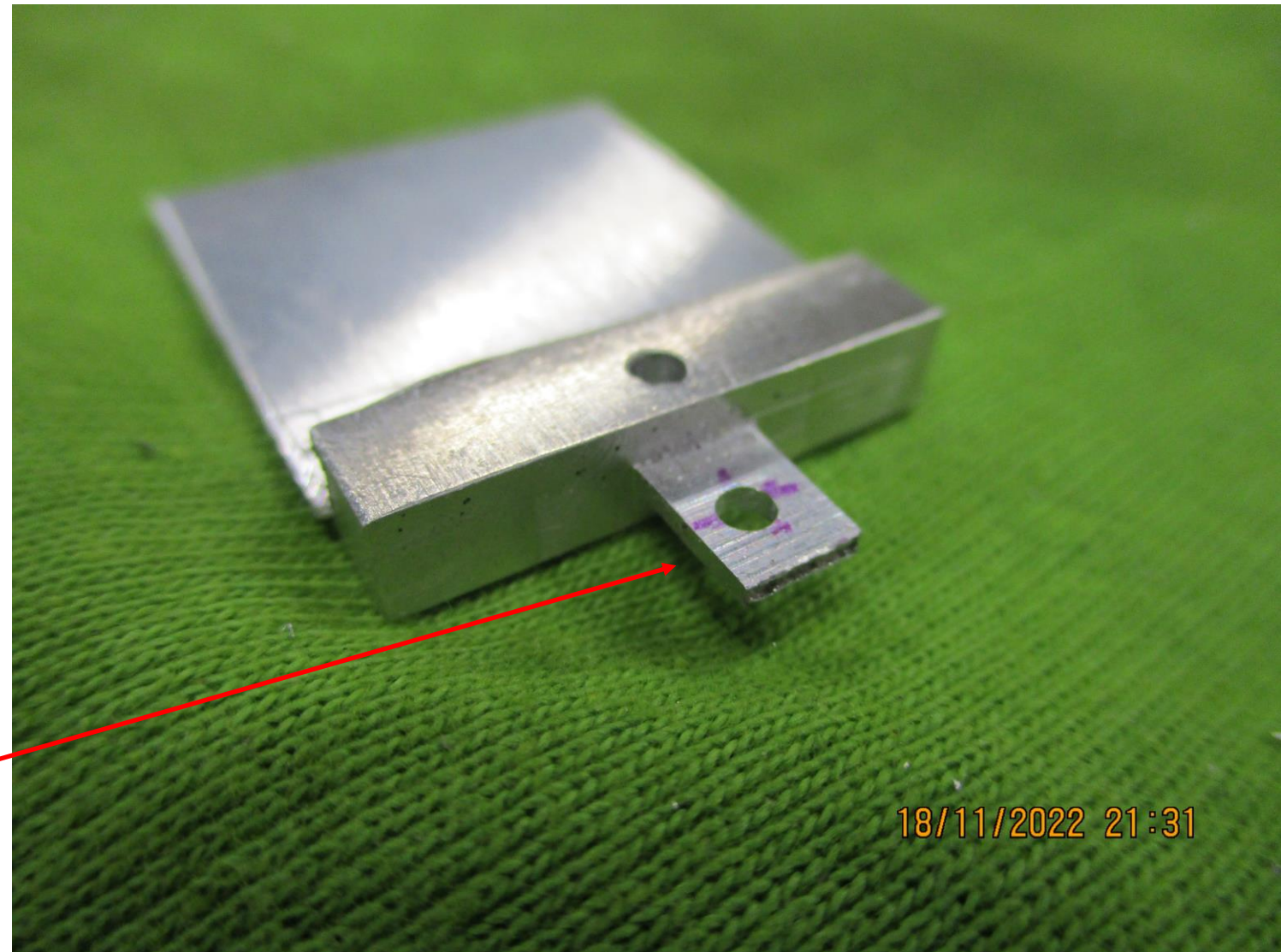


Precision

Width = 24.9mm



Small tab
5 x 7.5 x 1mm
Machined from
solid



Small slot
3mm wide
To secure the
target

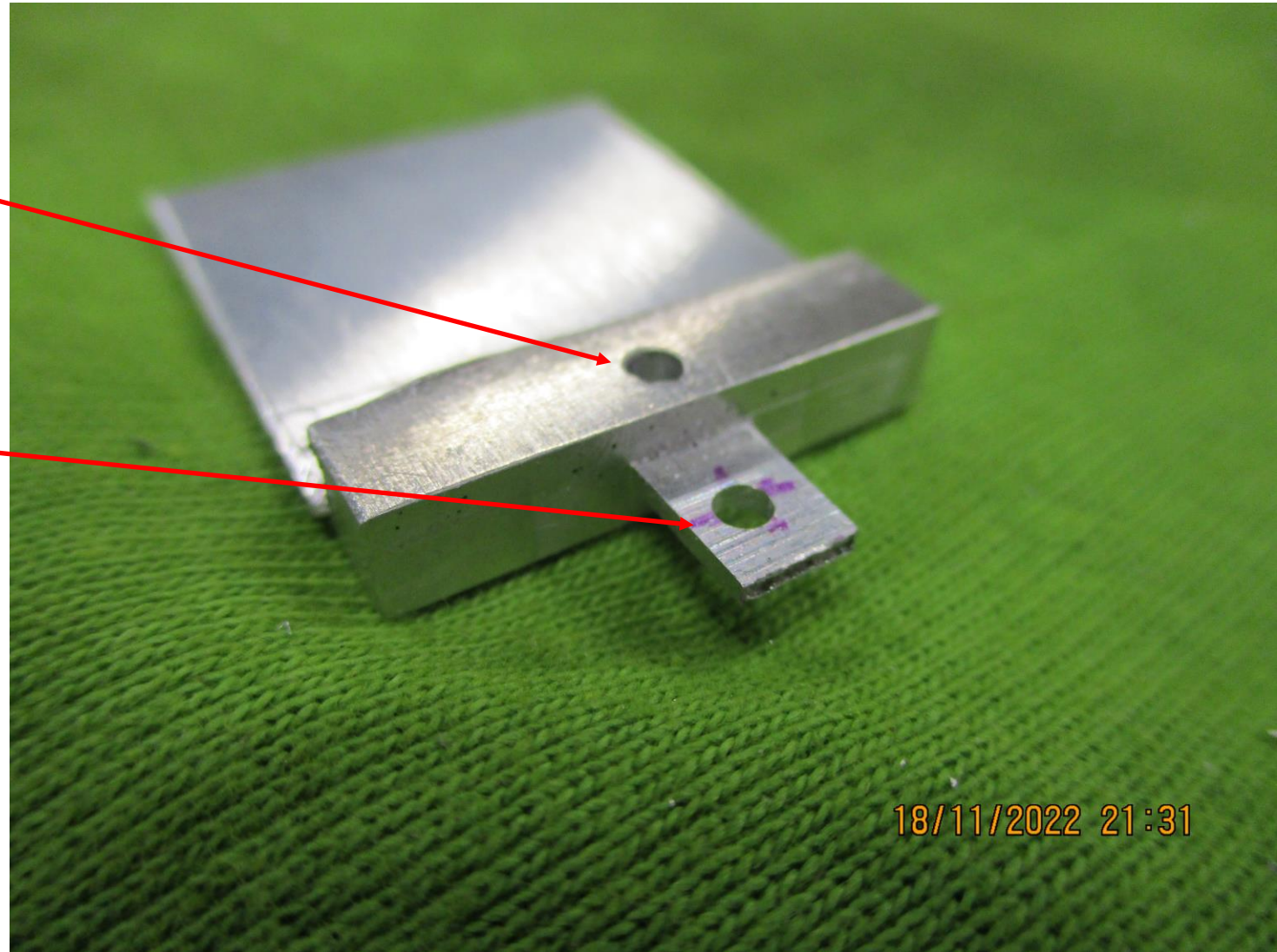


Securing hole

2.3mm diameter

Drilled in wrong place.

Correction badly
centered

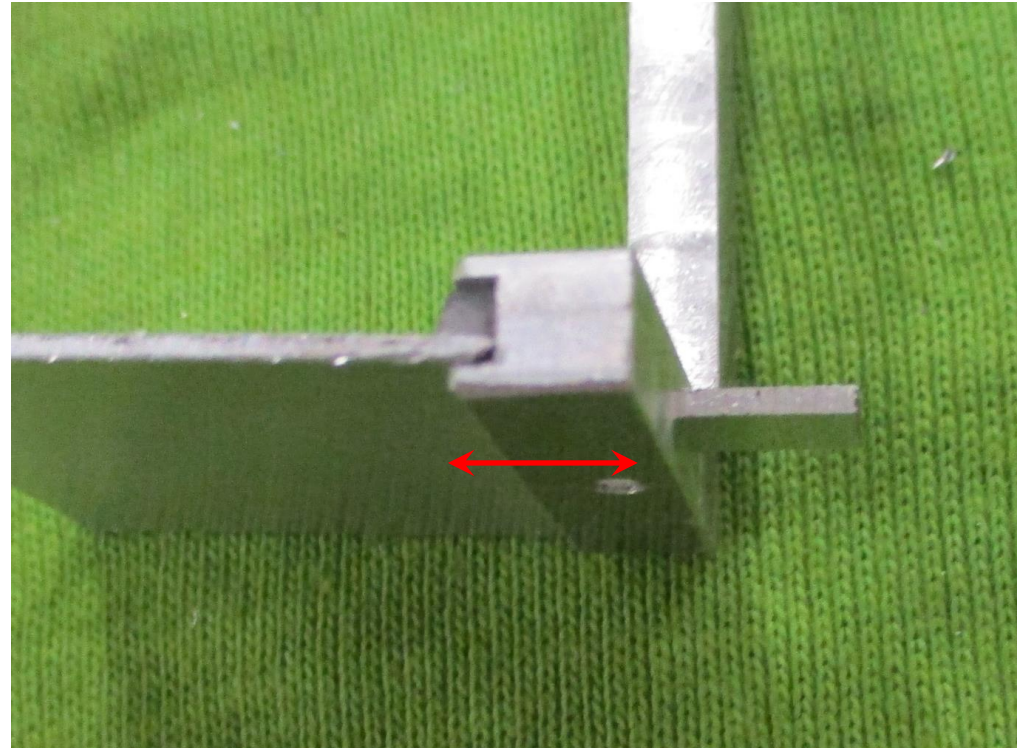


18/11/2022 21:31

Support height

Should be 3 or 5mm.

A dedicated shim to support the piece in the vice (that could have been made) would be required as the shim choice I had was not suitable.



Conclusion

I was able to perform the actions necessary to machine a target support as used by NA61.

What has been done is not intended as a copy.