

RE: About the glues used in RPC gas gap assembly

Kyong Sei Lee

Sent: 25 January 2023 09:41

To: Ian Crotty; Francesco Fallavollita; Nikolaos Zaganidis

Dear Francesco

- type of glue used to glue the spacers and for sealing;
-> Epoxy DP460
- type of glue used to glue the PET film on the graphite surface;
-> EVA based hotmelt glue that is very popular and often used for hotmelt guns
- type of glue used to glue the HV link on the graphite surface (see photo):
-> EVA based hotmelt glue that is often used for hotmelt guns

EVA based hotmelt glue provide strong adhesiveness to plastic material when applied to plastics in a form of melted gel.

Cheers, Kyongsei

From: Ian Crotty

Sent: 24 January 2023 11:36

To: Francesco Fallavollita; Nikolaos Zaganidis

Cc: Ian Crotty; Kyong Sei Lee

Subject: RE: About the glues used in RPC gas gap assembly

Hello Francesco

I am sure that Kyong Sei Lee is the most knowledgeable person in CMS RPC group and others to talk about this. He is in in cc

Cheers Ian

From: Francesco Fallavollita

Sent: 23 January 2023 20:15

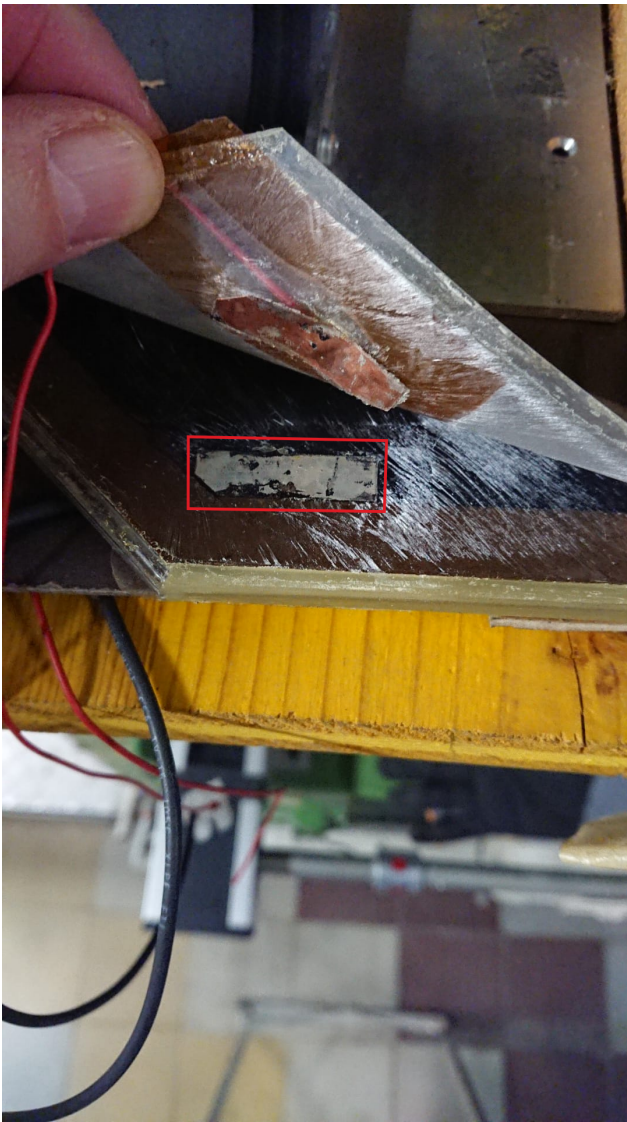
To: Nikolaos Zaganidis; Ian Crotty

Subject: About the glues used in RPC gas gap assembly

Dear Ian, Dear Nicolas,
How are you doing? ... I hope everything goes well!

I would kindly need some information about the glues used for assembling the gas gaps of the RPC chambers. In particular, I would need the following information:

- type of glue used to glue the spacers and for sealing;
- type of glue used to glue the PET film on the graphite surface;
- type of glue used to glue the HV link on the graphite surface (see photo):



Would you be able to provide this information or who could I ask?

Thanks a lot for your time and help.

Have a nice evening.

Best,
Francesco

--

Dr. Francesco Fallavollita
Max Planck Institute Postdoctoral Fellow
Max Planck Institut für Physik - Werner Heisenberg Institute
Föhringer Ring 6 D-80805 München, Germany
MPI phone: (+49) 89 32354-256
CERN phone: (+41) 22 76 67212
E-mail: fallavol@mpp.mpg.de