

meccalte



HCP 3

MECCALTE spa - Via Roma, 20 - 36051 CREAZZO (VI) ITALIA
 Tel. +39 0444/396111 - Fax. +39 0444/396166 - e-mail: info@meccalte.it
 web site: www.meccalte.com

14 POLI

400 Hz 3428 r.p.m.

CHARACTERISTICS

ambient 40° C

Type	KVA - cos φ 0.8 - 3 Phase continuous			Efficiency		
	CL. H (ΔT= 125°C)		CL. F (ΔT= 105°C)	η % CL. H (ΔT= 125°C)		
Series Star Λ	415	IP45	415	2/4	3/4	4/4
Parallel Star $\Lambda\Lambda$	208		208			
Series Delta Δ	240		240			
Parallel Delta $\Delta\Delta$	120		120			
HCP3-1S/14	5,5	4,5	5	82,1	83,8	83,5
HCP3-2S/14	7	5,5	6,5	83	84,6	84,4
HCP3-3S/14	9	7	8,5	83,8	85,4	85,1
HCP3-2L/14	11	8,5	10	84,2	85,8	85,5
HCP3-3L/14	13	10	12	84,7	86,2	86

Type	J (Kgm ²) B3-B14 FORM	Weight B3-B14 (Kg)	Air Volume (m ³ /min) 3428 rpm	Noise dB(A)	
				3428 rpm	
				1m	7m
HCP3-1S/14	0,0584	49	6,9	87	72
HCP3-2S/14	0,0726	54	6,8		
HCP3-3S/14	0,0939	61	6,8		
HCP3-2L/14	0,1152	72	6,6		
HCP3-3L/14	0,1436	80	6,5		

ACCESSORIES

REGULATOR		PARALLEL DEVICE	THERMAL PROTECTION			HEATERS	MECHANICAL PROTECTION			
UVR6/1-H400B	SR7/H400B		PTC	BIMET DEVICE	PT100		IP21	IP23	IP45	IP55
●	□	□	□	□	□	□	●	□	□	

● = Standard

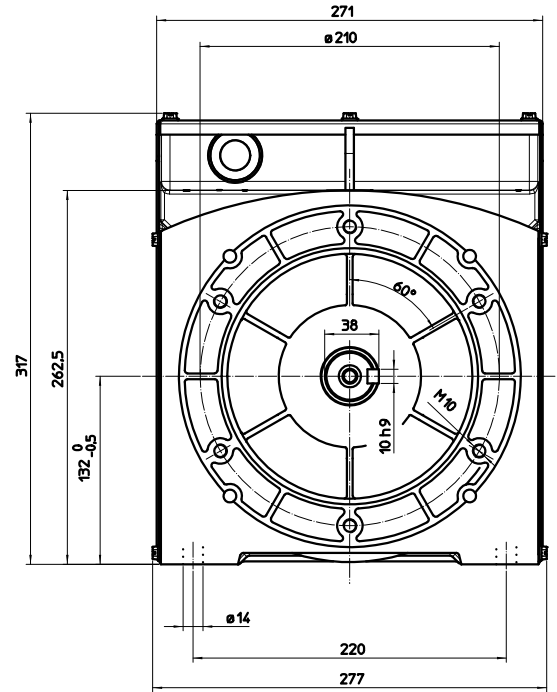
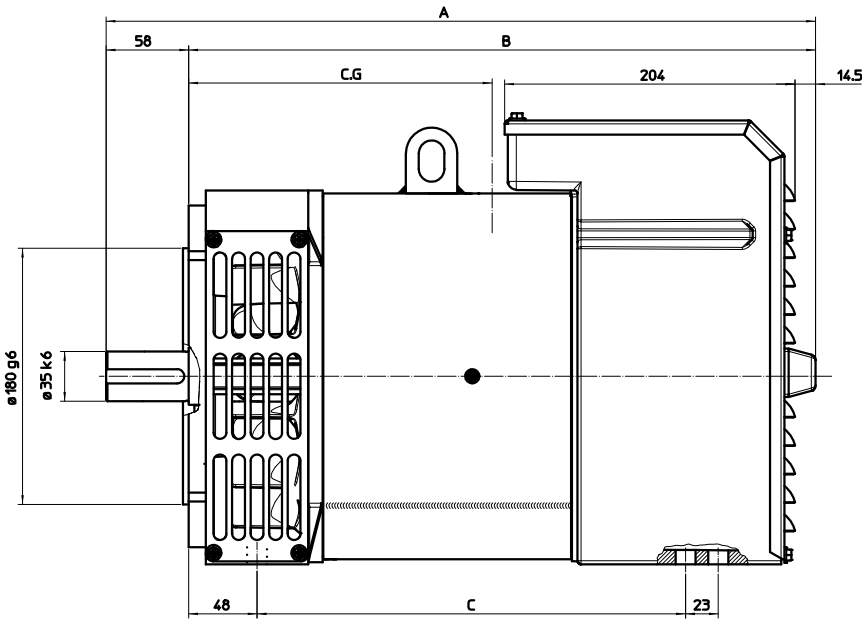
□ = Optional

Rating



OVERALL DIMENSIONS B3-B14

dimensions in mm

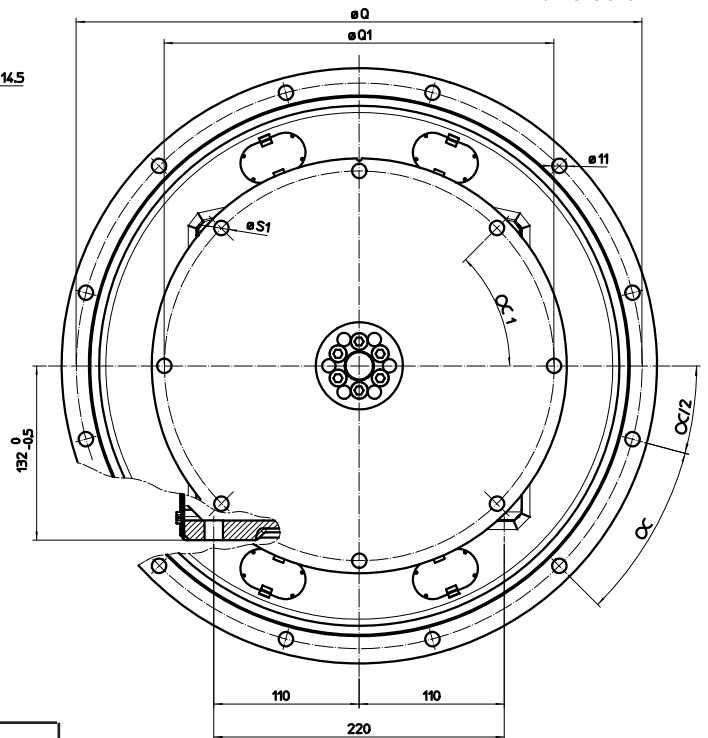
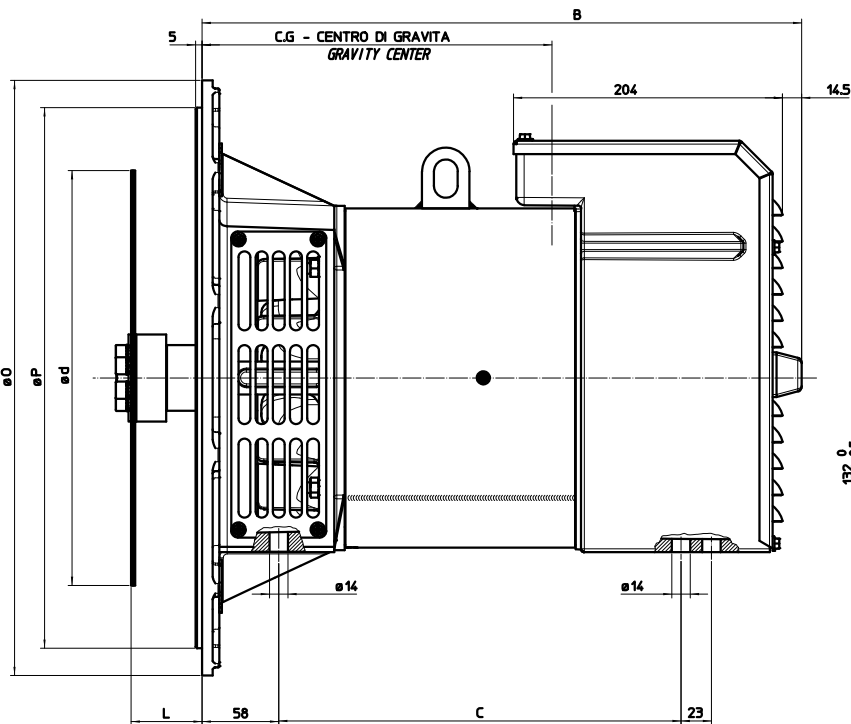


STACK	C.G.
HCP 3-1S 80/14	275
HCP 3-2S 100/14	270
HCP 3-3S 130/14	268
HCP 3-2L 160/14	274
HCP 3-3L 200/14	260

TYPE	A	B	C
HCP3S/20	498	440	301
HCP3L/20	568	510	371

OVERALL DIMENSIONS MD35 FORM

dimensions in mm



SAE N.	FLANGE				
	O	P	Q	n. fori	$\alpha/2$
6	308	266,7	285,75	8	22° 30'
5	356	314,3	333,4	8	22° 30'
4	403	362,0	381	12	15°
3	451	409,6	428,6	12	15°

SAE N.	DISC COUPLING						
	L	d	Q1	n. fori	S1	$\alpha/1$	
6 1/2	30,2	215,9	200	6	9	60°	
7 1/2	30,2	241,3	222,25	8	9	45°	
8	62	263,52	244,47	6	11	60°	
10	53,8	314,32	295,27	8	11	45°	
11 1/2	39,6	352,42	333,37	8	11	60°	

STACK	C.G.
HCP 3-1S 80/14	273
HCP 3-2S 100/14	269
HCP 3-3S 130/14	267
HCP 3-2L 160/14	279
HCP 3-3L 200/14	266

TYPE	B	C
HCP3S/20	454	305
HCP3L/20	524	375