

## MAIN MENU

[Support](#) [Events](#) [Quality](#) [Blog](#) [Catalogues](#) [Contact](#)

## FIBER OPTIC PIGTAIL

Single Mode Pigtail

Multi-Mode Pigtail

## FIBER OPTIC PATCH CORD

Single Mode Patch Cord

Multi-Mode Patch Cord

Single Mode Duplex Patch Cord

Multi-Mode Duplex Patch Cord

Single Mode | Uniboot Patch Cord

Multi-Mode | Uniboot Patch Cord

## FANOUT ASSEMBLIES

Single Mode Fan-out | 8 Fibers

Multi-Mode Fan-out | 8 Fibers

Single Mode Fan-out | 12 Fibers

Multi-Mode Fan-out | 12 Fibers

Single Mode Fan-out | 24 Fibers

Multi-Mode Fan-out | 24 Fibers

## MTP ASSEMBLIES

MTP Patch Cord

MTP/LC Fanout

MTP Breakout

## UNIVERSAL ASSEMBLIES

SC&amp;LC Universal Fanout

Universal MTP Assemblies

SC&amp;LC Universal Breakout

## FIBER OPTIC CABLE

Indoor Fiber Optic Cable

Universal Fiber Optic Cables

Outdoor CLT/SLT Fiber Optic Cables

Aerial Fiber Optic Cables

Special Fiber Optic Cable

## FIBER OPTIC ENCLOSURES

Splice Closures

Outdoor Termination Boxes

Indoor Termination Boxes

DIN Rail Termination Boxes

## DATA CENTER FIBER NETWORKS

UHD G-Connect | Panel &amp; Cassette

HD Series | Panel &amp; Cassettes

MIO Series

Bright Series | Fixed Type Panels

3U Sub-rack Panels

Accessories

## DATA CENTER COPPER NETWORKS

Copper Network Cables

Copper Patch Cord

Copper Patch Panel

Copper Keystone Jack

Accessories  
Copper Hand Tools  
DATA CENTER CABLING STRUCTURES  
Cable Raceways  
Cable Pathways  
TERMINATION UNITS  
Splice Shelf  
Tray Type Shelves  
ODF Cabinets  
Aluminium | ATP Series | Splice to Patch Panels  
FIBER OPTIC TOOLS  
Splice Devices  
Test Devices  
Fiber Optic Hand Tools  
Cleaning Tools  
Consumable Products  
Process Equipment  
FIBER ACCESSORIES  
Fiber Optic Splitters  
Adapters  
Cable Reels  
Consumable Accessories  
Termination Accessories  
TEST EQUIPMENT  
VIAVI Test Devices  
OTDR Launch Box  
Fiber Optic Coils  
OFF SALES PRODUCTS

[Login](#)[Sign Up](#)[Support](#) [Events](#) [Quality](#) [Blog](#) [Catalogues](#) [Contact](#)[₺](#) [\\$](#) [€](#)

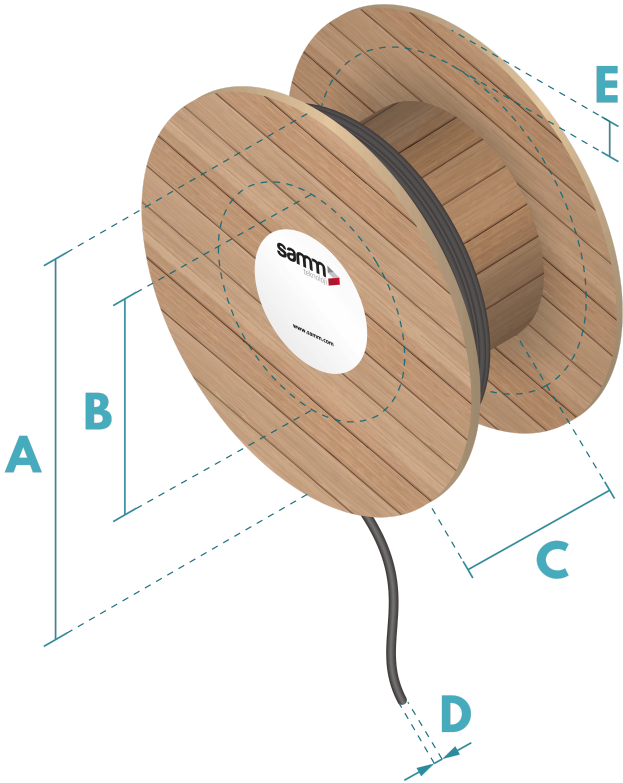
## Cable Reel Capacity Calculator

With our easy cable reel capacity calculator, you can calculate the maximum reel, spool or drum capacity. In other words, it calculates the maximum length of the cable that

Create an account  
to receive  
**Updates and  
Discounts**

Cable Reel Capacity Calculator || Drum Capacity Calculator

can be wound on a reel. All you need is to enter the reel (drum) dimensions and the diameter of the cable. Please note that these measurements might be different in reality, due to various aspects.



	Metric	Imperial
A	600	mm
B	200	mm
C	300	mm
D	7	mm
E	20	mm

Calculate Cable Length

Maximum Reel Capacity

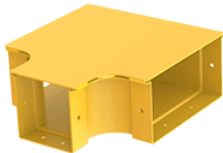
1348 m

Recommended Cable Length

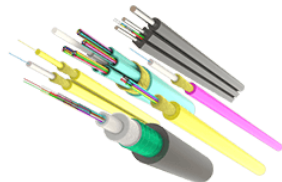
1100 m

Become a Member

Upgrade Your Data Center Project



Cable Raceways



Fiber Optic Cables

Reel ID	Flange	Barrel	Traverse	Cable	Edge	Reel	Rec. Cable	Units
---------	--------	--------	----------	-------	------	------	------------	-------

	Diameter	Diameter		Diameter	Clearance	Capacity	Length		
Enter ID	800	300	300	7	20	2353	1900	mm/m	X
Enter ID	600	200	300	7	20	1348	1100	mm/m	X
Enter ID	500	200	300	7	20	816	660	mm/m	X
Enter ID	600	200	300	7	20	1348	1100	mm/m	X

Download PDF

Export Results to Excel

## Clarification of Cable Reel or Cable Drum Elements

### A) Flange Diameter is the cable reel total size

The side circular guards that cover each end of the flat edges of the drum core are known as flanges. A common abbreviation for a wooden cable reel's total size is flange diameter. Flanges are available in a variety of sizes, much like the drum core.

### B) Barrel Diameter is the size of the drum core of the reel

The circular core of the cable reel is known as the drum core or the barrel. A large drum, or barrel, offers a broader safe bending radius for the cable but also reduces the capacity of the cable reel or spool. The barrel or drum diameter, in this cable reel capacity calculator, cannot be larger than the diameter of the two flanges, otherwise the cable reel capacity would be zero.

### C) Traverse is the inner width of the cable reel

The inner width of the cable reel or cable spool is called traverse. It determines how many rolls of cable can be stacked next to each other in each circular layer. The longer the traverse, or the wider the reel is, the more capacity it has.

#### D) Cable Diameter is the thickness of the cable on the reel

The cable diameter is essential in determining the capacity of the cable reel. If the cable has a small diameter more cable rolls can be stacked horizontally and more layers of rolls can be added vertically. A single cable reel can store different lengths of cables depending on the thickness, or diameter, of each cable.

#### E) Edge Clearance is the height of free-board

Some cable reels have round edged flanges, which leave a distance between the edge of the flange and the usable flange surface, up to which the cable rolls can be stacked. This empty space is called the free-board or edge clearance. In some countries there are regulations that determine the free-board edge clearance, because if the cable reel is totally full, the cable might suffer some damage in shipping or storage.

#### F) Maximum Reel Capacity

If the cable is wound up to the maximum usable surface of the flanges, it reaches the full capacity of the cable reel. If the flanges are not round edged or if you would like to use the cable reel capacity calculator to get the total theoretical capacity of the cable reel, set the edge clearance to zero.

#### F) Recommended Reel Capacity

If the winding cable on a reel is done manually, the tightness of cable rolls and layers might differ. Thus, it is safer to give each cable reel a recommended capacity which is a rough estimate of 80 percent of its maximum capacity. In addition, having some space between the cable rolls and the flange edge is a healthy practice to keep the cable damage risk at a minimum.

## Newsletter

I have read and accepted the **KVKK Privacy Terms**

Enter your email address

Secure shopping

Fast Shipping

Easy Refund

Installment Payment

We have combined our knowledge and experience with our domestic production power in our new SAMM Teknoloji İletişim A.Ş. website. You can now make a difference in your telecom, datacenter and structured cabling projects with our wide range of fiber optic products and solutions.

### Information

[Delivery Terms](#)

[Terms of Service](#)

[Preliminary Contract](#)

[Warranty and Refund Policy](#)

[Privacy and Security](#)

### Quick Access

[Homepage](#)

[New Products](#)

[Contact](#)

[Customer Service](#)

[My Cart](#)

### About Us

#### Address

Gebze Organize Sanayi Bölgesi (GOSB)  
İhsandede Cd. 800. Sok No: 802, 41400  
Gebze-Kocaeli, Türkiye

#### Phone

444 1 726

#### E-mail

For Domestic Inquiries from Turkey  
[telekom @ samm.com](mailto:telekom@samm.com)

For International Inquiries  
[export @ samm.com](mailto:export@samm.com)

Prepared by **T-Soft** E-Commerce.