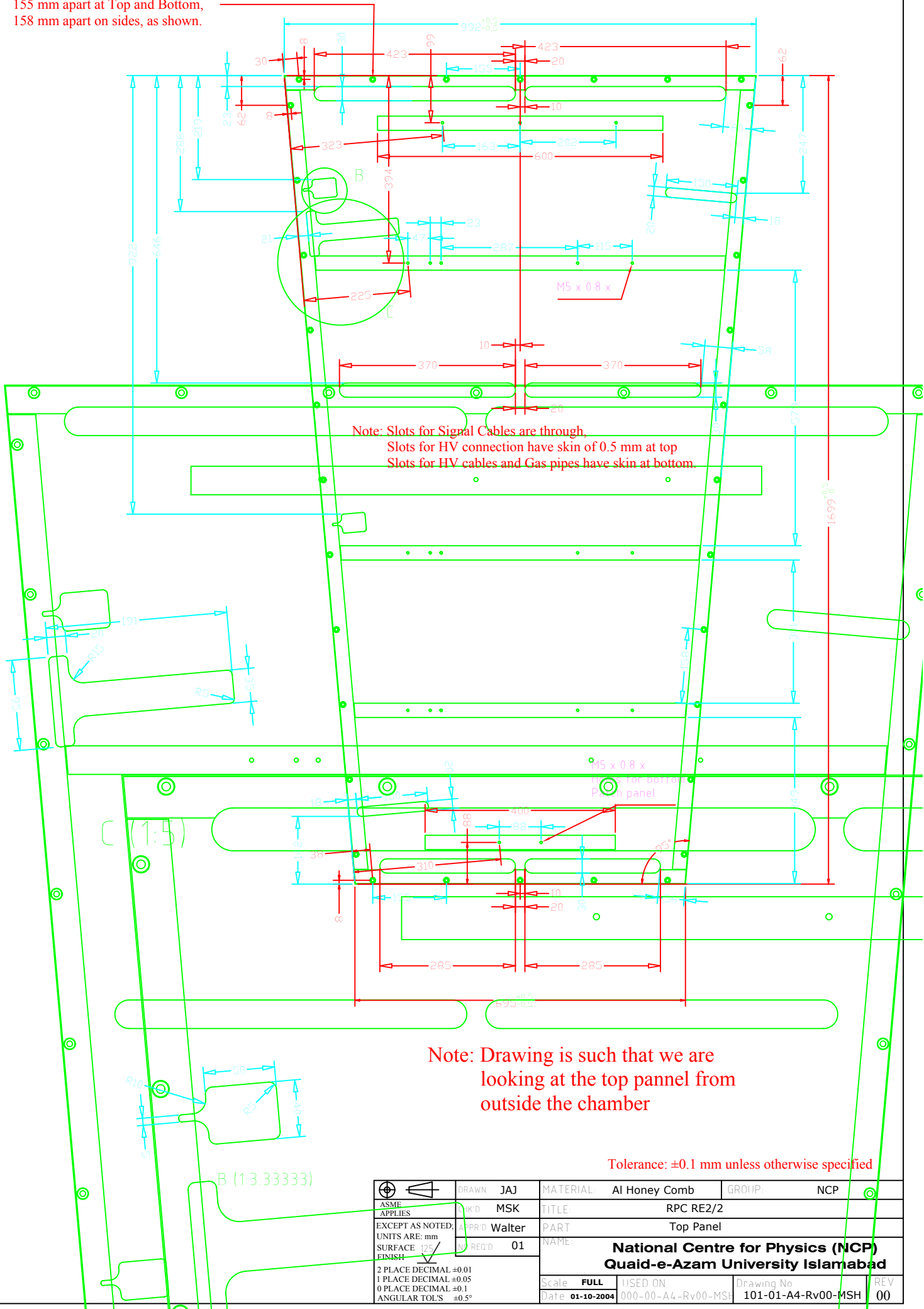


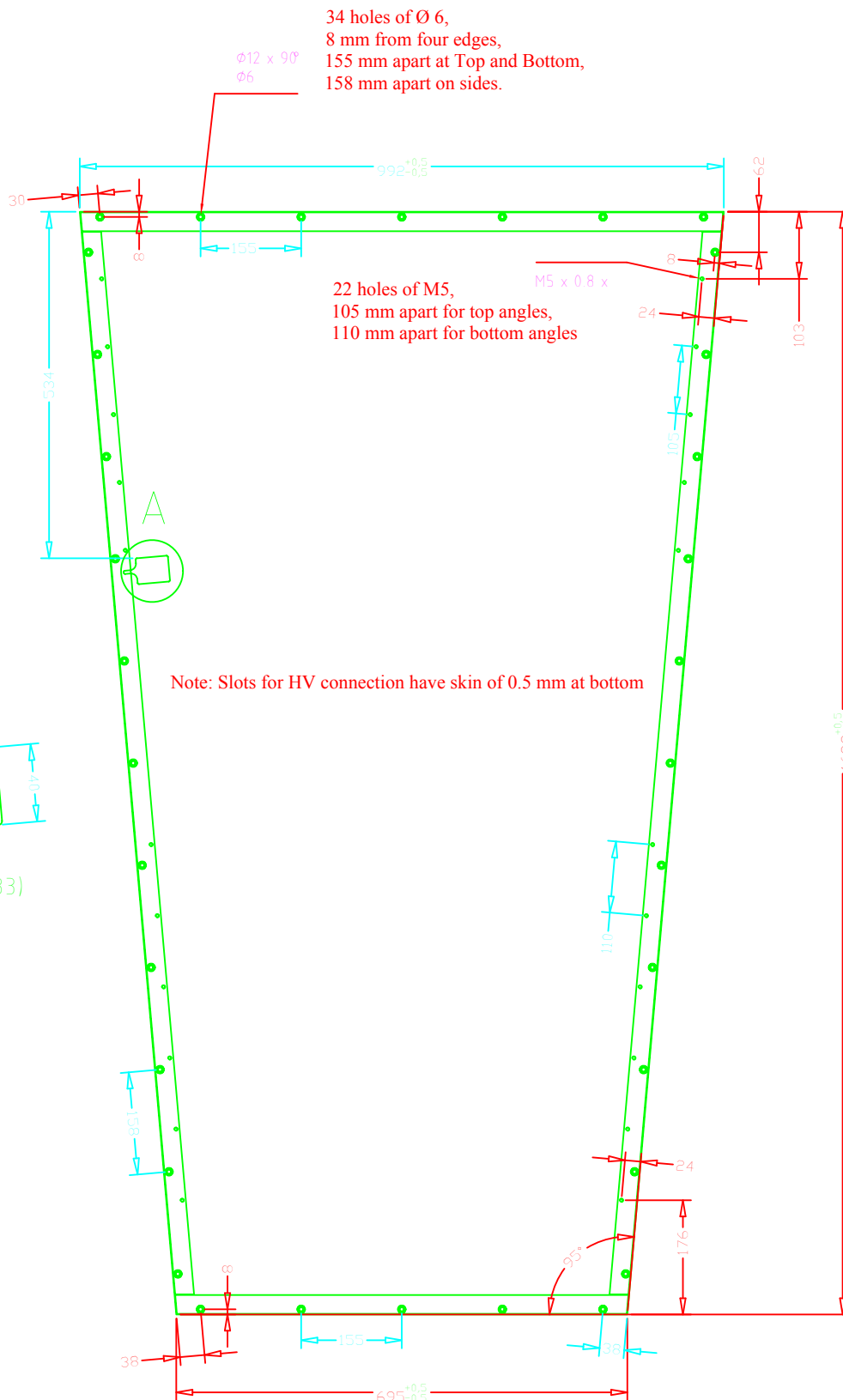


34 holes of Ø 6,
8 mm from all the four edges,
155 mm apart at Top and Bottom,
158 mm apart on sides, as shown.

Ø12 x 90°
Ø6



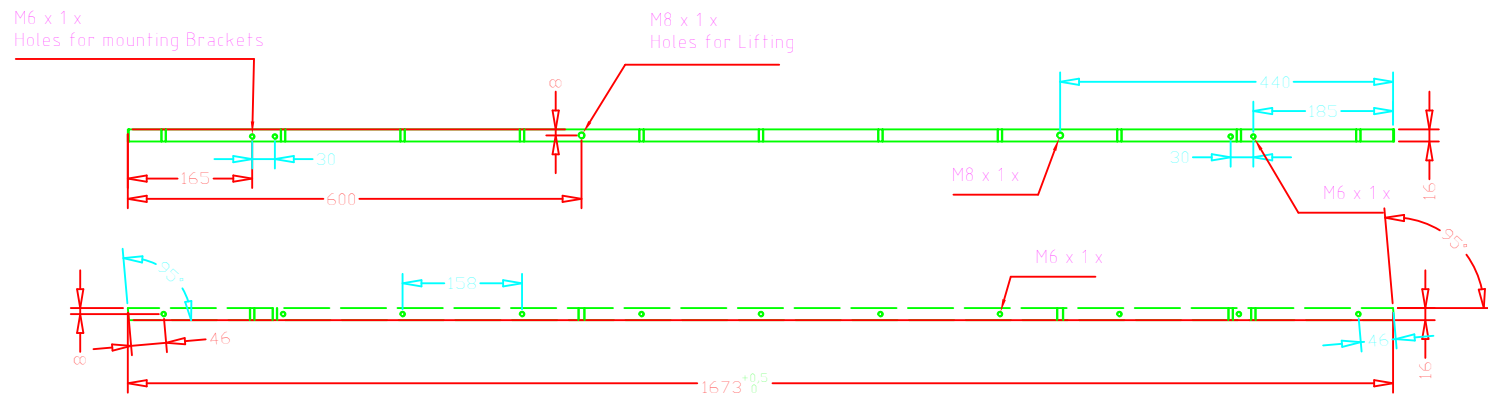
	DRAWN JAJ	MATERIAL	Al Honey Comb	GROUP	NCP	
ASME APPLIES	CHKD MSK	TITLE	RPC RE2/2			
EXCEPT AS NOTED: UNITS ARE: mm	APPROD Walter	PART	Top Panel			
SURFACE FINISH FINISH	REV REQD 01	NAME	National Centre for Physics (NCP) Quaid-e-Azam University Islamabad			
2 PLACE DECIMAL ±0.01 1 PLACE DECIMAL ±0.05 0 PLACE DECIMAL ±0.1 ANGULAR TOL'S ±0.5°		Scale FULL	USED ON	Drawing No	REV	
		Date 01-10-2004	000-00-A4-Rv00-MSH	101-01-A4-Rv00-MSH	00	



Note: Drawing is such that we are looking
at the bottom panel from inside
the chamber

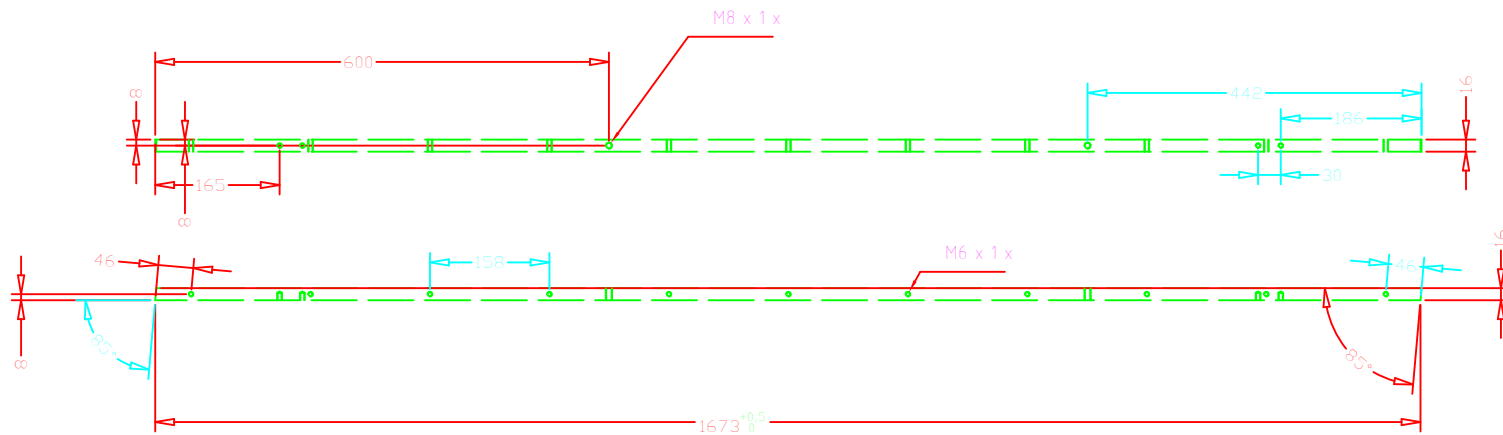
Tolerance: ±0.1 mm unless otherwise specified

 ASME APPLIES EXCEPT AS NOTED: UNITS ARE: mm SURFACE FINISH 125 2 PLACE DECIMAL ±0.01 1 PLACE DECIMAL ±0.05 0 PLACE DECIMAL ±0.1 ANGULAR TOL'S ±0.5°	DRAWN JAJ	MATERIAL: Al Honey Comb	GROUP: NCP
	CHK'D MSK	TITLE: RPC RE2/2	
	APPR'D Walter	PART: Bottom Panel	
	NO REQ'D 01	NAME: National Centre for Physics (NCP) Quaid-e-Azam University Islamabad	
Scale FULL		USED ON	Drawing No
Date 01-10-2004		000-00-A4-Rv00-MSH	101-01-A4-Rv00-MSH
			REV 00



Left Side Bar

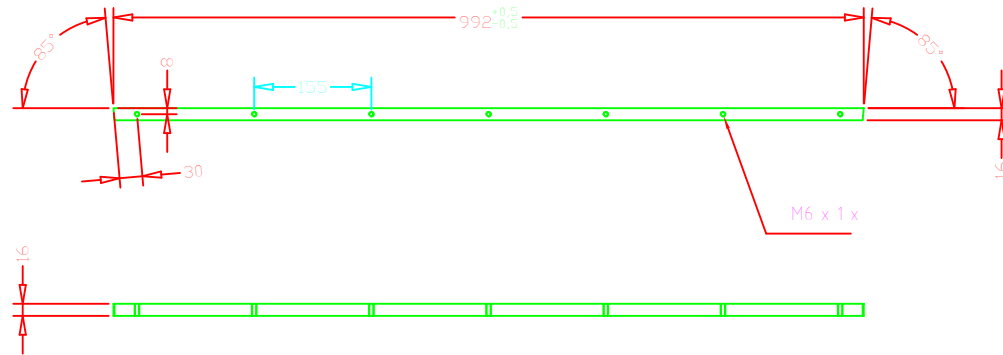
Note:
All these dimensions are with reference to bar.
16 mm must be added if the reference is
chamber.



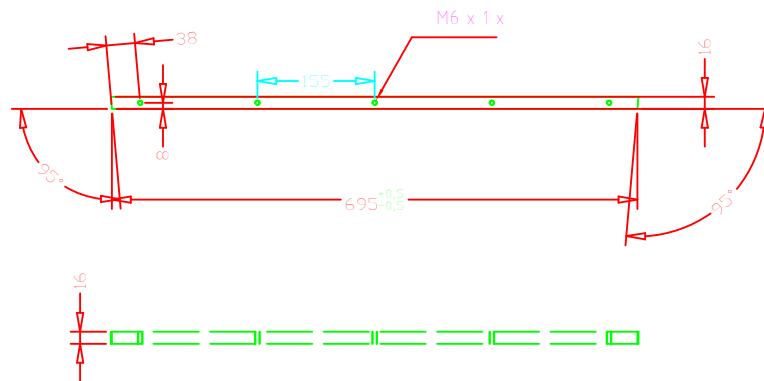
Right Side Bar

Tolerance: ± 0.1 mm unless otherwise specified

 ASME APPLIES EXCEPT AS NOTED: UNITS ARE: mm SURFACE FINISH 2 PLACE DECIMAL ± 0.01 1 PLACE DECIMAL ± 0.05 0 PLACE DECIMAL ± 0.1 ANGULAR TOL'S $\pm 0.5^\circ$	DRAWN	JAJ	MATERIAL:	Al	GROUP:	NCP
	CHK'D	MSK	TITLE:	RPC RE2/2		
	APPR'D	Walter	PART	Side Bars		
	NO. REQ'D	01	NAME:	National Centre for Physics (NCP) Quaid-e-Azam University Islamabad		
			Scale	FULL	USED ON	Drawing No
			Date	01-10-2004	000-00-A4-Rv00-MSI	101-01-A4-Rv00-MSH
					REV	00




Top Bar



Bottom Bar

Tolerance: ± 0.1 mm unless otherwise specified

	DRAWN	JAJ	MATERIAL	Al Bars	GROUP	NCP	
	CHK'D	MSK	TITLE	RPC RE2/2			
	APPR'D	Walter	PART	Top & Bottom Bars			
	NO REQ'D	01	NAME	National Centre for Physics (NCP) Quaid-e-Azam University Islamabad			
EXCEPT AS NOTED: UNITS ARE: mm SURFACE FINISH 125/ 2 PLACE DECIMAL ± 0.01 1 PLACE DECIMAL ± 0.05 0 PLACE DECIMAL ± 0.1 ANGULAR TOL'S $\pm 0.5^\circ$			Scale	FULL	USED ON	Drawing No	REV
			Date	01-10-2004	000-00-A4-Rv00-MSI	101-01-A4-Rv00-MSH	00

